

Schroon Lake Invasive Species Reconnaissance 2017

Robert Bombard & Nicholas Rowell

190 Ridge Street, Apt 6

Glens Falls, NY 12801



The 2017 Eurasian Watermilfoil (EWM) survey of Schroon Lake is a continuation of our three year partnership with the Schroon Lake Association. The EWM survey parameters included us snorkeling and scuba diving approximately 10ft apart throughout the littoral zone of the chosen sites. The survey consisted of snorkeling the shallow areas of plant growth to scuba diving to the deepest point of plant growth. Throughout each site surveyed, the EWM plant locations were mapped using a GPS. After each survey day, a report and map of GPS EWM locations were sent to both the SLA and AIM Inc. The sites surveyed were chosen through a combination of the SLA Board Members, the Lake Manager suggestions, areas with extensive littoral zones, high nutrient areas at tributary outlets and a focus on sites not yet surveyed. The following is a compilation of our daily reports, GPS EWM location maps and site descriptions.

July 1st EWM Report

Schroon Lake Beach- We surveyed from the boat launch to the end of the beach. This area had a sandy bottom with limited plant growth that consisted of mostly low growing plants and no EWM plants located. Visibility was poor in this area due to recent storms.

North of Steep Bay- This area had prolific plant growth in areas around 7ft in depth. We observed numerous native milfoils throughout the area and no EWM was located. We plan on continuing north in our survey this coming weekend

July 8th EWM Report

Skylark Beach- We surveyed north and south of the beach and from shore to approximately 400' out. Lush plant growth started about 200' offshore in 12' depth. One mature EWM plant was observed and removed. Native milfoil was also observed throughout the area.

Meadow Cove- At the mapped GPS point, approximately 100 widely scattered EWM plants were observed in a north and south line across mid bay with the majority of the plants observed near the GPS point. Many of the EWM plants were mature plants in 10-12' depths. The cove has very lush plant growth in 10' depths with numerous native milfoil plants.

As requested, we will continue our survey this Saturday on the east shore of word of life island and at Tamarac/the Landings.



July 15th EWM Report

East Shore Word of Life Island- The south GPS point on survey map one is located near the concrete boat dock. This area has very lush growth with very tall native milfoil and coontail. There are also widely scattered mature EWM plants surrounding this southern most GPS point. The plants were in approximately 10' depths.

The two northern mapped GPS points on survey map one have a moderately sized EWM bed located in a small bay along shore between the two points. EWM plants were observed from the shoreline out to the two northern GPS points and scattered in between. The area will be difficult to harvest due to the clay sediments. The EWM plants are heavily

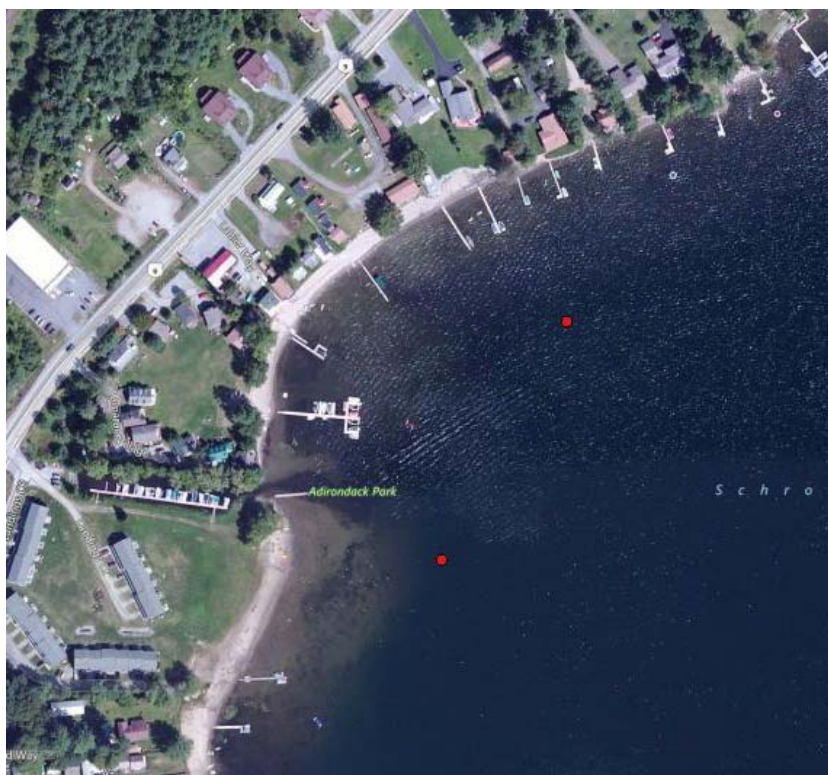


fouled with a covering of clay.

Tamarac/The Landings- Between the two mapped GPS points on survey map two, we observed closely scattered mature EWM plants. The EWM plants were located in approximately 10' depths and were growing to the surface. One foot tall EWM plants continued to the outlet of Horseshoe Pond Brook and were covered in filamentous algae. There is also native milfoil growing throughout this location.

Continuing North of Steep Bay- We continued our survey north of Steep Bay and no EWM plants were observed.

Marina Boat Launch- There are considerable amounts of EWM plants directly off the boat launch. There are also three other species of milfoil located within the marina area.



August 12 & 13th EWM Report

WOL Ranch- At the south mapped GPS point we observed moderately scattered EWM plants growing to the surface and the scouts have also marked this area with milfoil bottles. Additionally widely scattered EWM plants were observed north in a line to the wetland which is also a GPS mapped point. This area also has significant native plant growth and the water is very cloudy with very limited visibility. We also wanted to note that the 6" green PVC pipe coming from the shore of WOL has a disconnection.

Brill Island- At the GPS point west of Brill Island we checked a small known site from year one and observed approximately 25 widely scattered EWM plants in 8' depth.

Schroon Manor- We made a quick stop and observed three EWM plants on the backside of docks 12 & 13 with numerous native milfoil plants growing around the docks.

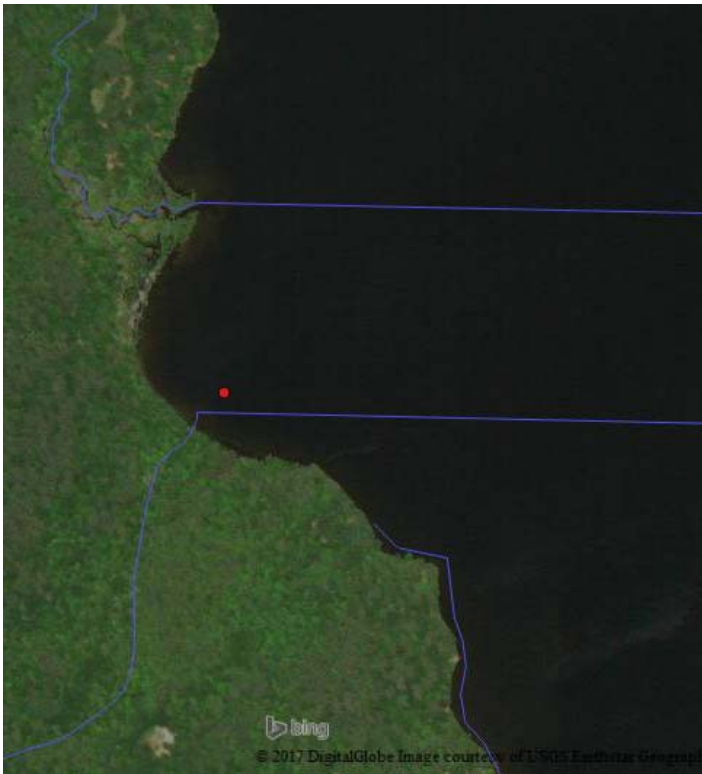
Six Loon Bay- We surveyed between Moffit and Acker Brook and at the mapped GPS points we observed 25+ EWM plants widely scattered.

Old Narrows Restaurant- The three mapped GPS points form an approximate line of very widely scattered single EWM plants. This is a very large area and with very dense native vegetation.

North of WOL Island- No EWM plants were observed.

We would like to note that the observed EWM plants in the listed locations are very widely scattered and the overall EWM plant densities are very low.





August 19 & 20th EWM Report

Mill Creek Outlet- No EWM plants were observed.

Sucker Brook Outlet- No EWM plants were observed. We also surveyed the bay south of the brook outlet.

Thurman Pond Outlet- No EWM plants were observed at the outlet or in the bay north of the outlet.

East Shore Opposite Clark Island- No EWM plants were observed. We surveyed both bays on the east shore which have very large littoral zones extending into the high traffic channel.

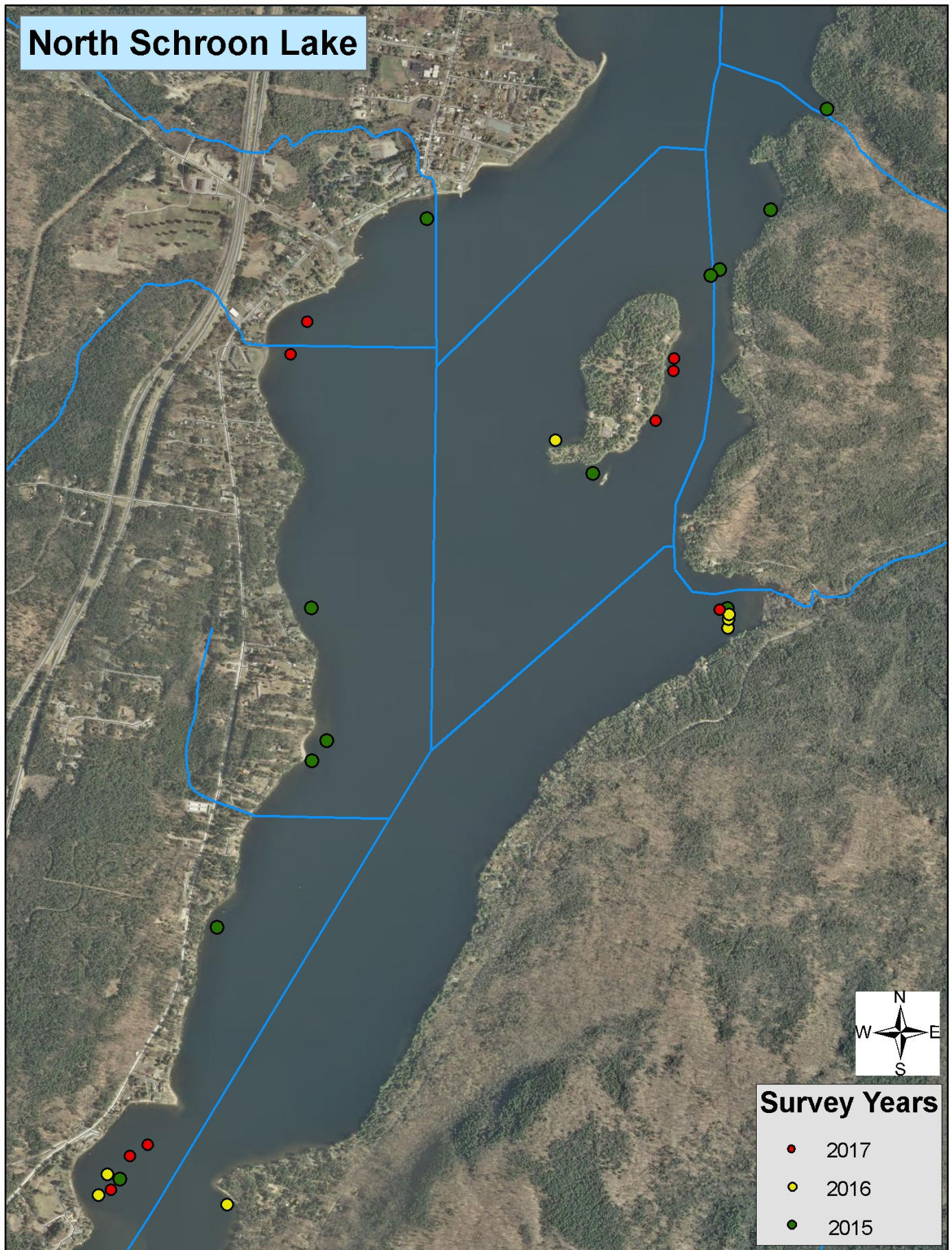
Over the past three years, our overall observations of the EWM plants in Schroon Lake have similar conclusions with widely scattered, single stem and low density populations throughout the majority of the surveyed locations.

During the first two survey seasons we had concentrated on areas with in the lakes that have previously been harvested or were found to have abundant native vegetation. The lake has approximately 25 miles of shoreline, a surface area of 6.4 mi², of which 20% or 1.3mi² is littoral zone. This past season we scouted in areas with higher probabilities of regrowth, lake sections previously unassessed (by us) and locations where EWM was observed and reported to us. From the observations made during the survey the concentrations of EWM within the overall aquatic plant community continues to be extremely low. As you will see when the year end harvest totals are published two thirds of all the plants removed from the lake came from two locations; one being the marina boat ramp site and the second being a newly found area close to site 14 well off shore and north of Grove Point.

Our survey consisted of 7 days totaling 40.5 hours and 9 EWM locations were GPS mapped. For 2018, we would recommend surveying the areas of the west shore that have not been surveyed and especially the areas with large littoral zones.

We would like to thank the Schroon Lake Association for an outstanding three year partnership.

North Schroon Lake



South Schroon Lake

