

## AWI Partner Program Reports

### Schroon Region – Brant Lake

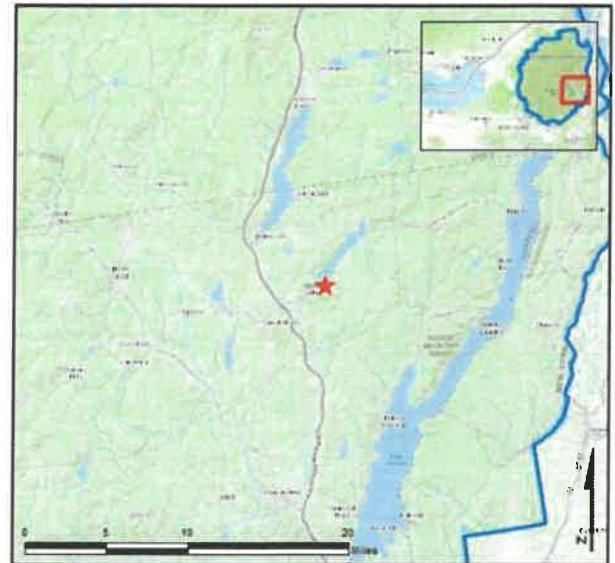
**AIS intercepted:** 0  
**Boats inspected:** 1,362  
**Number of visitors:** 2,549  
**Boats failing inspection:** 0%

**Dates of operation:** May 21 – October 9  
**Total number of days covered:** 89  
**Weekly coverage:** 7 days  
**Visitors showing spread prevention awareness:** 99%  
**Number of previously visited waterways:** 9

**AIS present in waterbody:** curly-leaf pondweed,  
Eurasian watermilfoil

**Partnerships:** Brant Lake Association and Town of Horicon

**Notes:** AWI provided support through WISPA data management.



Watercraft	Boat Type										total # boats observed	total # boats inspected
	Barge	Canoe	Dock	Kayak	Motor	PWC	Row	Sail	SUP	Wind		
# boats observed	0	57	0	215	1008	62	5	1	14	0	1362	1362
percentage of total boats	0%	4%	0%	16%	74%	5%	0%	0%	1%	0%	100%	100%

Boats observed at launch, including those not inspected. PWC=personal watercraft, SUP=stand-up paddleboard, Wind=windsurfer.

total # visitors	organisms found			total organisms	# boats dirty	# boats w/AIS	# of inspections	% of inspected boats dirty	% of inspected boats w/AIS
	entering	leaving	roadside						
2549	0	0	--	0	0	0	1362	0%	0%

Boats dirty = watercraft with any organic material, invasive, non-invasive or unknown.

Visitor Responses	AIS spread prevention awareness											# groups asked
	yes	Inspect	Wash	Drain	Bait	LW	Dry	Decon	same lake	first/frozen	didn't ask	
# groups	1321	1134	68	1	0	0	2	1	38	93	8	1332
percentage of total groups asked	99%	85%	5%	0%	0%	0%	0%	0%	3%	7%	NA	

Yes = showed AIS spread prevention awareness; Drain = drained bilge; Bait = emptied bait bucket/dispensed of bait; LW = drained livewell; Dry = dried boat; Decon = visited decon station; Same Lake = boat only goes in this lake; First/Frozen = first launch of the season or frozen boat.

Organisms Removed	Organism Type							total # AIS	% of inspected boats w/AIS
	Non-invasive	CLP*	EWM*	VLM*	SWF*	WC*	ZM*		
# organisms	0	0	0	0	0	0	0	0	0%
percentage of total orgs	0%	0%	0%	0%	0%	0%	0%		

Non-invasive = native aquatic or terrestrial material; CLP = curly-leaf pondweed; EWM = Eurasian watermilfoil; VLM = variable-leaf milfoil; SWF = spiny waterflea; WC = water chestnut; ZM = zebra mussel; \*/AIS = aquatic invasive species.

Aquatic Invasive Species Intercepted by Stewards	# found on boats launching	Previous Waterway	# found on boats retrieving	Previous Waterway
Eurasian watermilfoil	1	None (1)	1	Brant Lake (1)
water chestnut	1	Hudson River (1)	0	N/A
<b>Totals</b>	<b>2</b>		<b>1</b>	

Previous Waterways for Launching Boats	# visits
SAME LAKE - PREVIOUS VISIT	873
NONE	191
Saratoga Lake	6
Schroon Lake	4
Loon Lake (Warren County)	2
Paradox Lake	2
UNKNOWN (boater doesn't know)	2

Previous Waterways for Launching Boats	# visits
Cossayuna Lake (Washington County)	1
Hudson River	1
Lake Luzerne (Warren County)	1
Putnam Pond (Essex County)	1
RENTAL	1
Skaneateles Lake	1
<b>Total</b>	<b>1086</b>

State of Motorized Boat Registration  
(n=1,291)

