

AWI Partner Program Reports

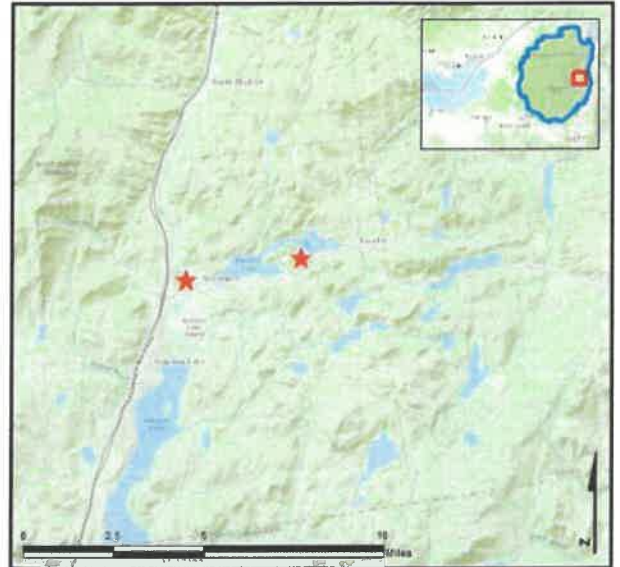
Schroon Region – Paradox Lake & Severance Decon Station

AIS intercepted: 3
Boats inspected: 1,223
Number of visitors: 1,881
Boats failing inspection: 2.9%
Decontaminations performed: 129

Dates of operation: May 28 – October 10
Visitors showing spread prevention awareness: 75%
Number of previous waterways: Paradox 47, Severance 23

AIS present in waterbody: curly-leaf pondweed,
 Eurasian watermilfoil, variable-leaf milfoil
Partnerships: Paradox Lake Association, NYSDEC Paradox Lake
 Campground

Notes: AWI provided support through WISPA data management for
 Severance Decon.



| Watercraft | Boat Type | | | | | | | | | | total # boats observed | total # boats inspected |
|---------------------------|-----------|------------|----------|------------|------------|-----------|-----------|----------|-----------|----------|------------------------------|-------------------------------|
| | Barge | Canoe | Dock | Kayak | Motor | PWC | Row | Sail | SUP | Wind | | |
| Paradox Lake | 2 | 99 | 1 | 462 | 440 | 29 | 13 | 3 | 43 | 0 | 1092 | 1081 |
| percentage of total boats | 0% | 9% | 0% | 42% | 40% | 3% | 1% | 0% | 4% | 0% | 100% | 99% |
| Severance Decon | 0 | 3 | 1 | 39 | 87 | 10 | 1 | 0 | 1 | 0 | 142 | 142 |
| percentage of total boats | 0% | 2% | 1% | 27% | 61% | 7% | 1% | 0% | 1% | 0% | 100% | 100% |
| total | 2 | 102 | 2 | 501 | 527 | 39 | 14 | 3 | 44 | 0 | 1234 | 1223 |
| percentage of total boats | 0% | 8% | 0% | 41% | 43% | 3% | 1% | 0% | 4% | 0% | 100% | 99% |

Boats observed at launch, including those not inspected. PWC=personal watercraft, SUP=stand-up paddleboard, Wind=windsurfer.

| | total # visitors | organisms found | | | total organisms | # boats dirty | # boats w/AIS | # of inspections | % of inspected boats dirty | % of inspected boats w/AIS |
|-----------------|---------------------|-----------------|-----------|----------|--------------------|------------------|------------------|---------------------|-------------------------------|-------------------------------|
| | | entering | leaving | roadside | | | | | | |
| Paradox Lake | 1649 | 7 | 26 | -- | 33 | 28 | 1 | 1081 | 2.6% | 0.1% |
| Severance Decon | 232 | -- | -- | 7 | 7 | 7 | 2 | 142 | 4.9% | 1.4% |
| total | 1881 | 7 | 26 | 7 | 40 | 35 | 3 | 1223 | 2.9% | 0.2% |

Boats dirty = watercraft with any organic material, invasive, non-invasive or unknown.

| Visitor Responses | AIS spread prevention awareness | | | | | | | | | | | # groups asked |
|----------------------------------|---------------------------------|-----------|-----------|-----------|----------|-----------|-----------|------------|-----------|--------------|------------|-------------------|
| | yes | Inspect | Wash | Drain | Bait | LW | Dry | Decon | same lake | first/frozen | didn't ask | |
| Paradox Lake | 258 | 29 | 63 | 3 | 0 | 3 | 49 | 27 | 68 | 92 | 428 | 387 |
| percentage of total groups asked | 67% | 7% | 16% | 1% | 0% | 1% | 13% | 7% | 18% | 24% | NA | |
| Severance Decon | 124 | 66 | 17 | 44 | 1 | 13 | 39 | 124 | 0 | 0 | 0 | 124 |
| percentage of total groups asked | 100% | 53% | 14% | 35% | 1% | 10% | 31% | 100% | 0% | 0% | NA | |
| total | 382 | 95 | 80 | 47 | 1 | 16 | 88 | 151 | 68 | 92 | 428 | 511 |
| percentage of total groups asked | 75% | 19% | 16% | 9% | 0% | 3% | 17% | 30% | 13% | 18% | NA | |

Yes = showed AIS spread prevention awareness; Drain = drained bilge; Bait = emptied bait bucket/disposed of bait; LW = drained livewell; Dry = dried boat; Decon = visited decon station; Same Lake = boat only goes in this lake; First/Frozen = first launch of the season or frozen boat.

| Organisms Removed | Organism Type | | | | | | | total # AIS | % of inspected boats w/AIS |
|--------------------------|---------------|----------|----------|----------|----------|----------|----------|-------------|----------------------------|
| | Non-invasive | CLP* | EWM* | VLM* | SWF* | WC* | ZM* | | |
| Paradox Lake | 32 | 0 | 1 | 0 | 0 | 0 | 0 | 1 | 0.1% |
| percentage of total orgs | 97% | 0% | 3% | 0% | 0% | 0% | 0% | | |
| Severance Decon | 5 | 2 | 0 | 0 | 0 | 0 | 0 | 2 | 1.4% |
| percentage of total orgs | 71% | 29% | 0% | 0% | 0% | 0% | 0% | | |
| total | 37 | 2 | 1 | 0 | 0 | 0 | 0 | 3 | 0.2% |
| percentage of total orgs | 93% | 5% | 3% | 0% | 0% | 0% | 0% | | |

Non-invasive = native aquatic or terrestrial material; CLP = curly-leaf pondweed; EWM = Eurasian watermilfoil; VLM = variable-leaf milfoil; SWF = spiny waterflea; WC= water chestnut; ZM = zebra mussel; */AIS = aquatic invasive species.

Paradox Lake

| Aquatic Invasive Species Intercepted by Stewards | # found on boats launching | Previous Waterway | # found on boats retrieving | Previous Waterway |
|--|----------------------------|-------------------|-----------------------------|-------------------|
| Eurasian watermilfoil | 0 | N/A | 1 | Paradox Lake (1) |
| Totals | 0 | | 1 | |

Severance Decon

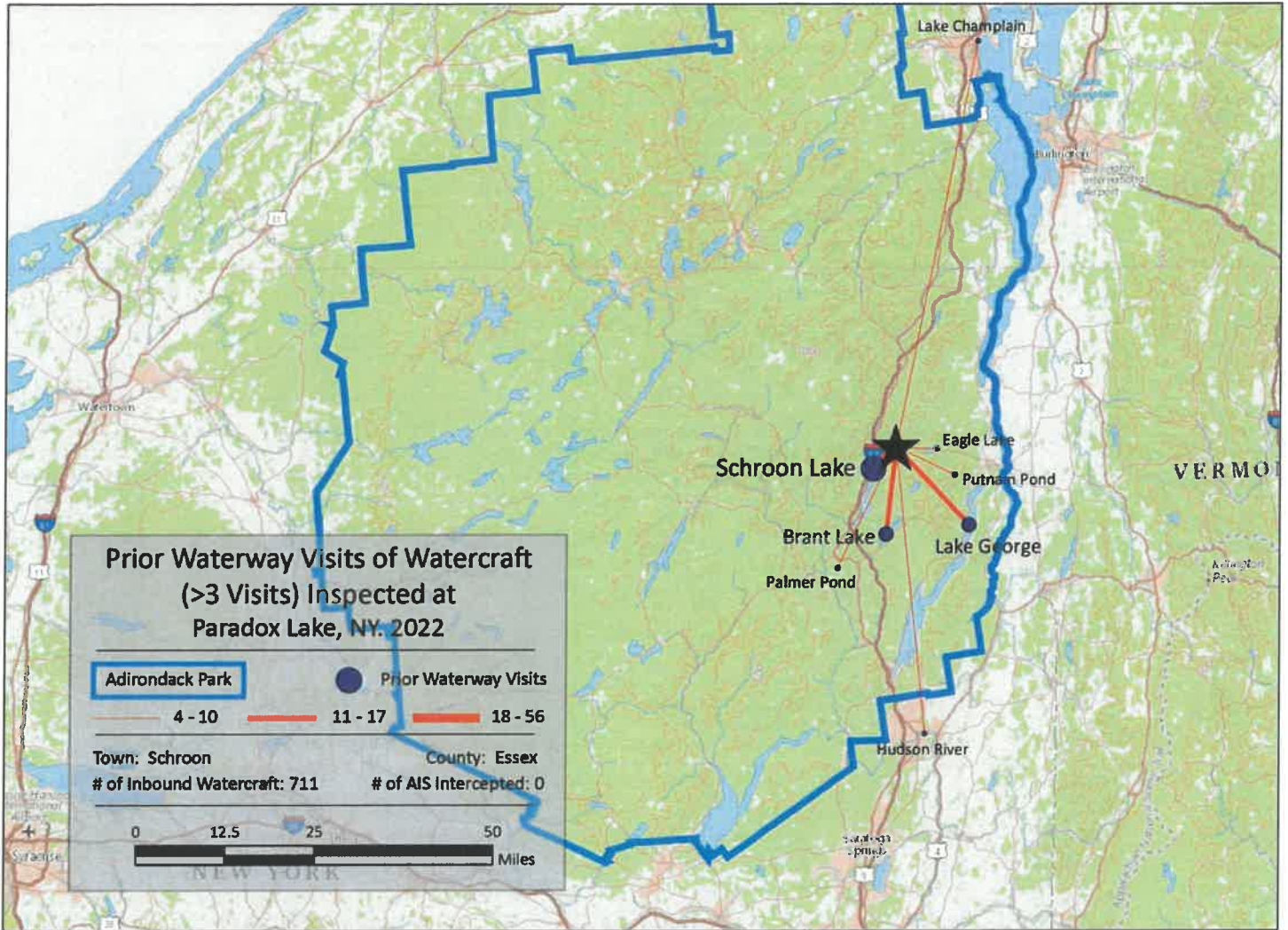
| Aquatic Invasive Species Intercepted by Stewards | # found at roadside | Previous Waterway |
|--|---------------------|--------------------------------------|
| curly-leaf pondweed | 2 | Schroon Lake (1), Lake Champlain (1) |
| Totals | 2 | |

Paradox Lake

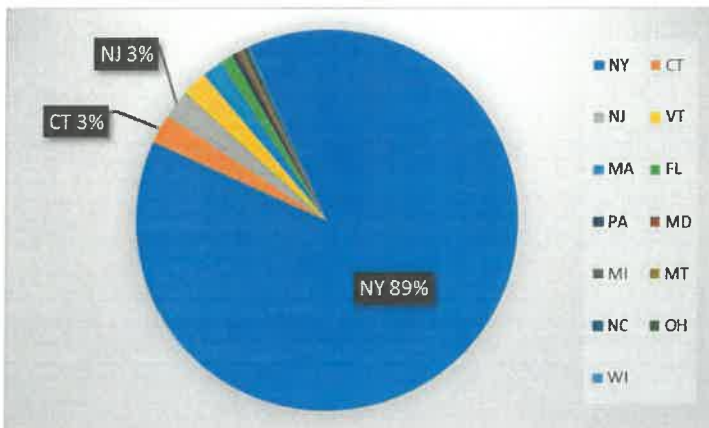
| Previous Waterways for Launching Boats | # visits | Previous Waterways for Launching Boats | # visits | Previous Waterways for Launching Boats | # visits |
|--|----------|--|----------|---|------------|
| NONE | 371 | Indian Lake (Hamilton County) | 2 | Finger Lakes (unspecified) | 1 |
| SAME LAKE - PREVIOUS VISIT | 127 | Lake Abanakee (Hamilton County) | 2 | Grafton Lakes State Park (Rensselaer Cty) | 1 |
| Schroon Lake | 56 | Lake Colby | 2 | Great Sacandaga Lake | 1 |
| Lake George | 16 | Lincoln Pond (Essex County) | 2 | Harris Lake (Essex County) | 1 |
| Brant Lake | 14 | Middle Saranac Lake | 2 | Jabe Pond (Warren County) | 1 |
| UNKNOWN (boater doesn't know) | 12 | Minerva Lake (Essex County) | 2 | Kayaderosseras Creek (Saratoga County) | 1 |
| NOT ASKED | 11 | Moose Pond Campground (Essex County) | 2 | Lake Adirondack (Hamilton County) | 1 |
| Putnam Pond (Essex County) | 10 | Moreau Lake (Saratoga County) | 2 | Lake Hopatcong, Jefferson, NJ | 1 |
| Hudson River | 7 | Rollins Pond | 2 | Lake Luzerne (Warren County) | 1 |
| Lake Champlain | 7 | Saranac Chain of Lakes (unspecified) | 2 | Lake Windsor, Wantage, NJ | 1 |
| Palmer Pond (Warren County) | 6 | Saratoga Lake | 2 | Long Lake | 1 |
| Eagle Lake (Essex County) | 5 | Stewarts Bridge Reservoir | 2 | Lower Saranac Lake | 1 |
| Forked Lake | 3 | Unspecified Private Owned | 2 | Mud Pond (Franklin County) | 1 |
| Pepacton Reservoir (Delaware County) | 3 | Adirondacks (unspecified) | 1 | Nelson Pond, East Montpelier, VT | 1 |
| Round Lake (Saratoga County) | 3 | Ballston Lake | 1 | Oxbow Lake (Hamilton County) | 1 |
| Schroon River, NY | 3 | Blue Mountain Lake | 1 | Polliwog Pond (Franklin County) | 1 |
| Upper St. Regis Lake | 3 | Canandaigua Lake | 1 | Pyramid Lake (Essex County) | 1 |
| Glen Lake (Warren County) | 2 | Connecticut River | 1 | RENTAL | 1 |
| Hemlock Lake (Livingston/Ontario Counties) | 2 | Cranberry Lake | 1 | Total | 711 |

Severance Decon

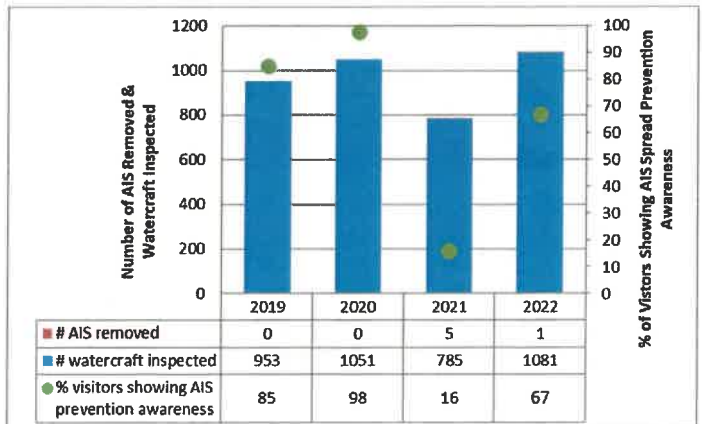
| Previous Waterways for Launching Boats | # visits | Previous Waterways for Launching Boats | # visits | Previous Waterways for Launching Boats | # visits |
|--|----------|--|----------|---|------------|
| NONE | 42 | Putnam Pond (Essex County) | 3 | Lincoln Pond (Essex County) | 1 |
| Paradox Lake | 24 | Stillwater Reservoir | 3 | Mohawk River | 1 |
| Schroon Lake | 21 | Little Tupper Lake | 2 | Mollys Falls Pond, Marshfield, VT | 1 |
| Lake Champlain | 13 | Brant Lake | 1 | Raquette Lake | 1 |
| Lake George | 6 | Clinton Reservoir, West Milford, NJ | 1 | St. Lawrence River | 1 |
| Schroon River, NY | 6 | Connecticut River | 1 | Tully Lake (Cortland/Onondaga Counties) | 1 |
| Eagle Lake (Essex County) | 5 | Indian Lake, Worcester, MA | 1 | Tupper Lake | 1 |
| Hudson River | 4 | Lake Bonaparte | 1 | Upper Saranac Lake | 1 |
| | | | | Total | 142 |

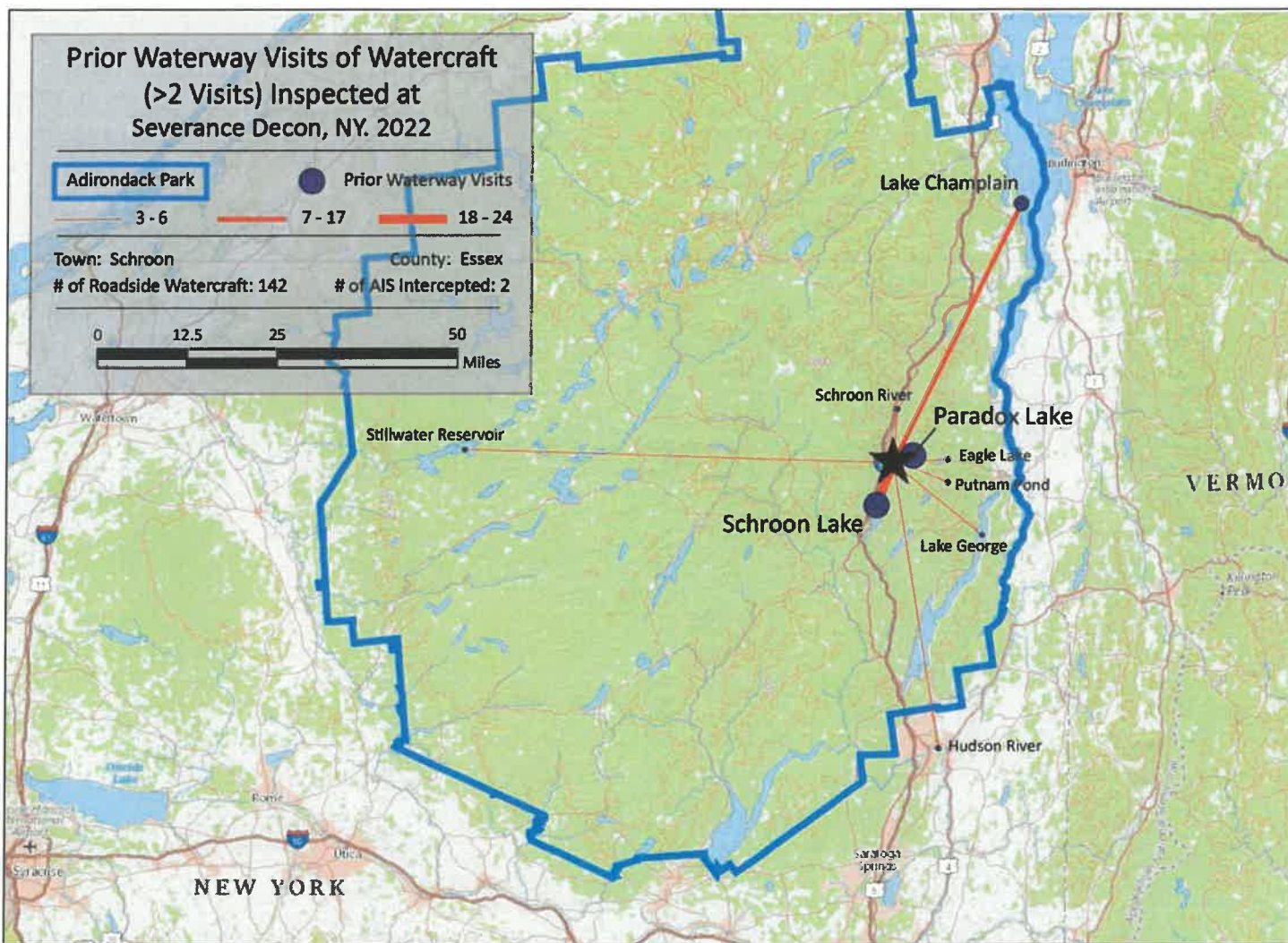


State of Motorized Boat Registration
(n=485)

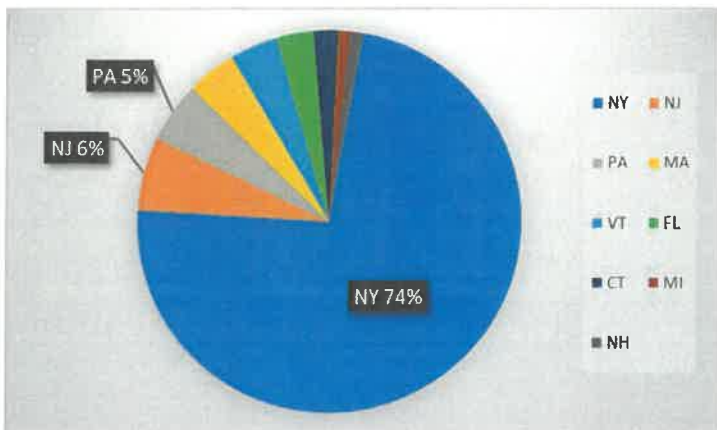


Paradox Lake





State of Motorized Boat Registration (n=97)



Severance Decon

