

Aquatic Invasive Species Management Report

Schroon Lake

August 26-29, 2019

Prepared By:

INVASIVE SOLUTIONS



DIVE COMPANY, LLC

Overview

Crew spent the week working through sites which had not been harvested since early in the season and responding to aquatic invasive species (AIS) reports from the lake.

Harvest data for the week: 14 bags @ 350 lbs.

Operations

Monday- 8/26/19

Locations: Site 1

Description: Crew spent the day working through the Word of Life Bay (site 1) finding EWM sparse to sporadic within the native plants. Divers worked the site with swim patterns which they extended further than normal from shore to search for any outliers, eventually finding one cluster of mature EWM. EWM harvested was mostly single stems 0.5-4' with the cluster containing multi-stems 2-6' in length.

Harvest Data: 3 bags @ 75 lbs.

Tuesday- 8/27/19

Locations: Sites 1, 4

Description: Crew returned to site 1 and continued to work through the area as they had the previous day. Crew was locating similar plants as the previous day, with a few additional clusters of mature EWM on the deeper edge of the area. 1 bag harvested. Note: Of the total two day bag count from site 1, close to 3.5 of the bags came from the clusters of mature EWM harvested.

Crew worked the area northwest of Brills Island (site 4) locating sparse EWM growth, mostly single stems with an occasional multi-stem, ranging from 0.5-5' in length. ¼ bag harvested.

Harvest Data: 1.25 bags @ 31.3 lbs.

Wednesday- 8/28/19

Locations: Sites 19, 25, 26

Description: Crew began in the north end of Terra Alta (site 25) and worked south through the site. Crew was finding EWM sporadically throughout the native plants, mostly single stems 0.5-3'. As Crew worked the south of the site, they located a few clusters of EWM within the Lili-pads. 3 bags harvested.

Crew worked both shores of the Schroon Lake Marina harvesting sporadic EWM growth, most of which was harvested near the gas dock/ ramp area. Crew noted with the very dense native plant growth, this site is slow to harvest. 3.5 bags harvested.

Crew worked the northern end of site 19 harvesting EWM from a shallow area on the northeast side of Clark Island. ¼ bag harvested.

Harvest Data: 6.75 bags @ 168.8 lbs.

Thursday- 8/29/19

Locations: Sites 3, 5, 8, 12

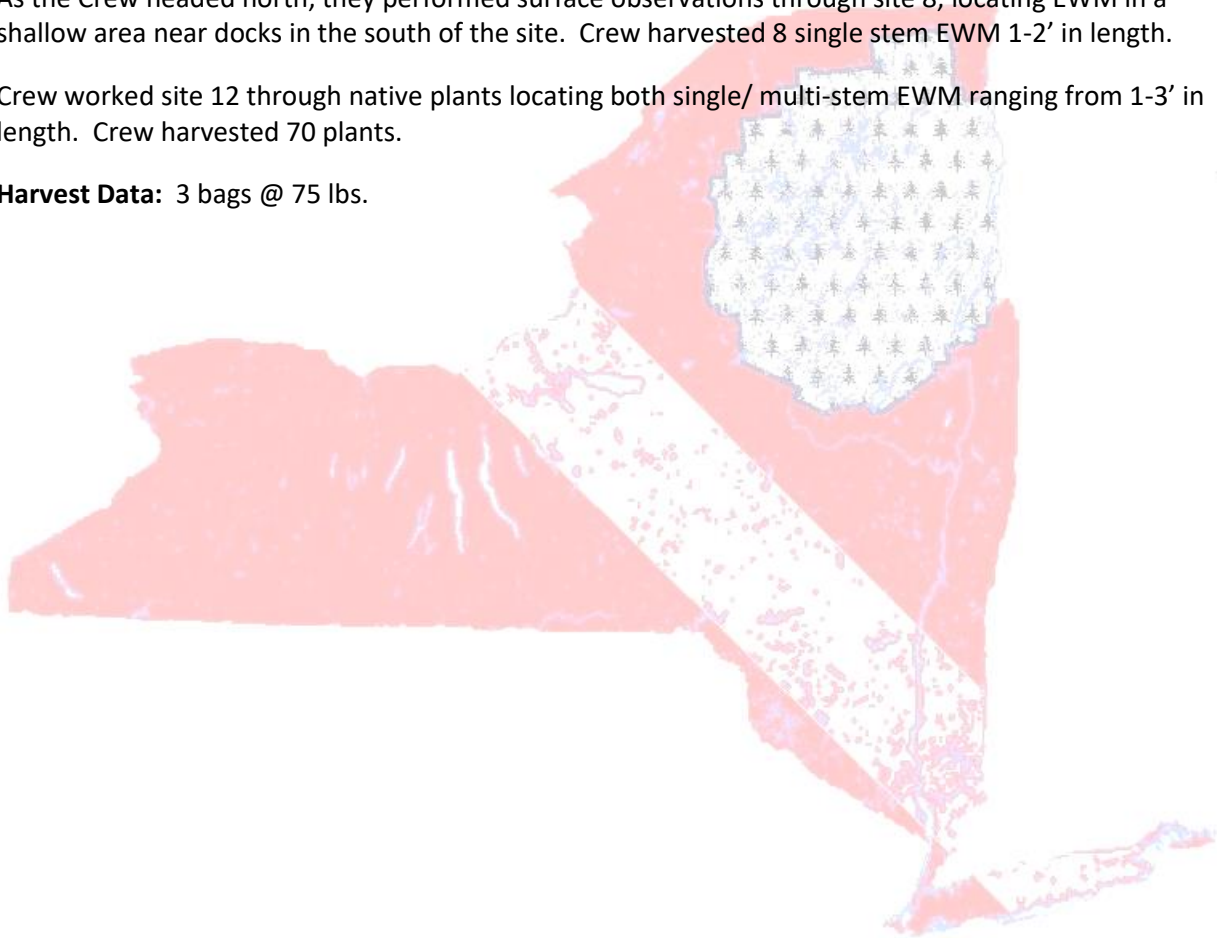
Description: Crew began the day working site 5. In a coordinated effort with the Lodges to increase Crew safety and allow for a more efficient harvest, boats were moved to clear out the harvest area. Crew harvested both single/ multi-stem EWM ranging from 1-3' from all boat slips, growing within dense native plants. 3 bags harvested.

Crew worked site 3 near an area identified in an AIS report, locating 8 EWM plant.

As the Crew headed north, they performed surface observations through site 8, locating EWM in a shallow area near docks in the south of the site. Crew harvested 8 single stem EWM 1-2' in length.

Crew worked site 12 through native plants locating both single/ multi-stem EWM ranging from 1-3' in length. Crew harvested 70 plants.

Harvest Data: 3 bags @ 75 lbs.



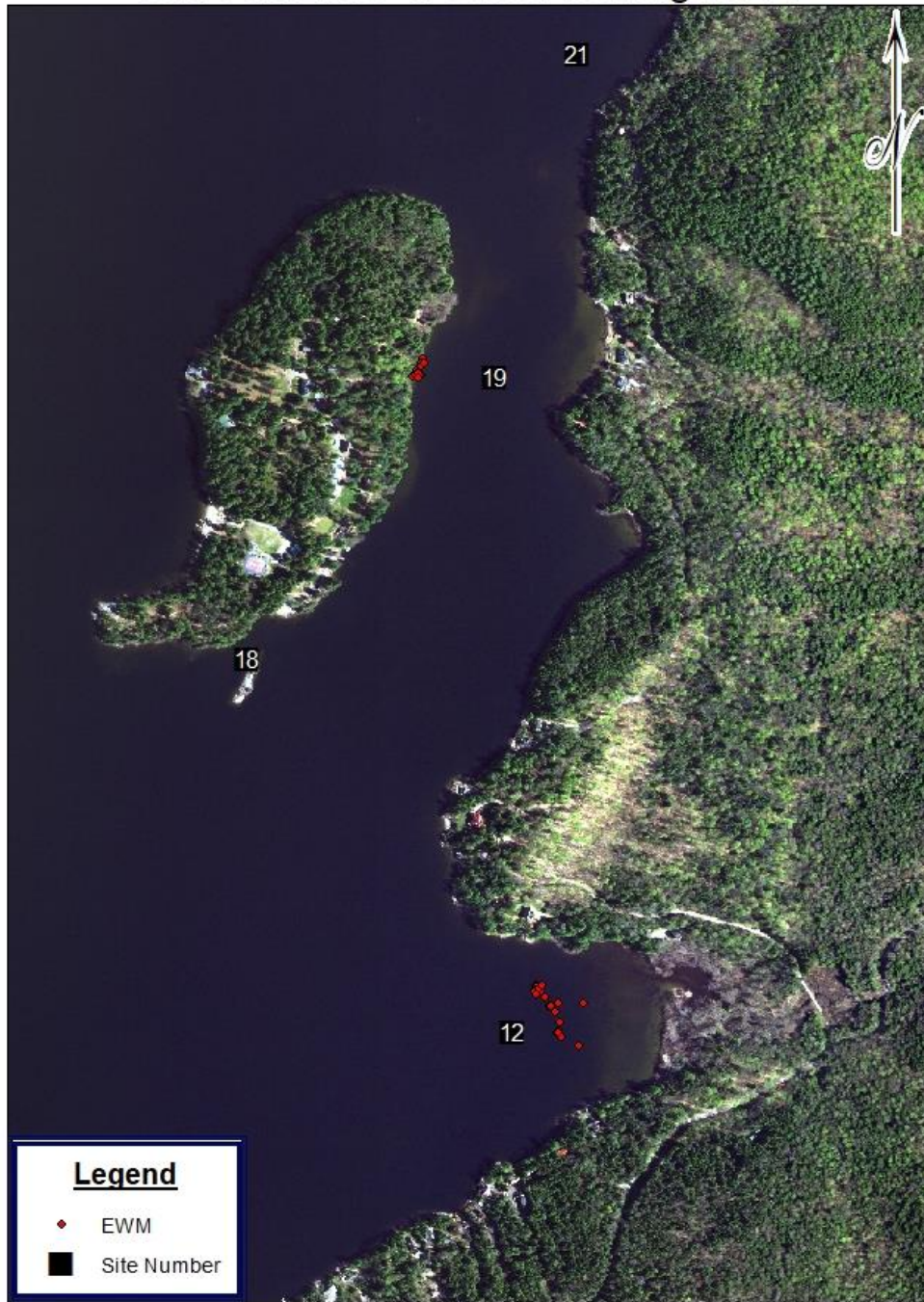
Schroon Lake- week of 26 August 19



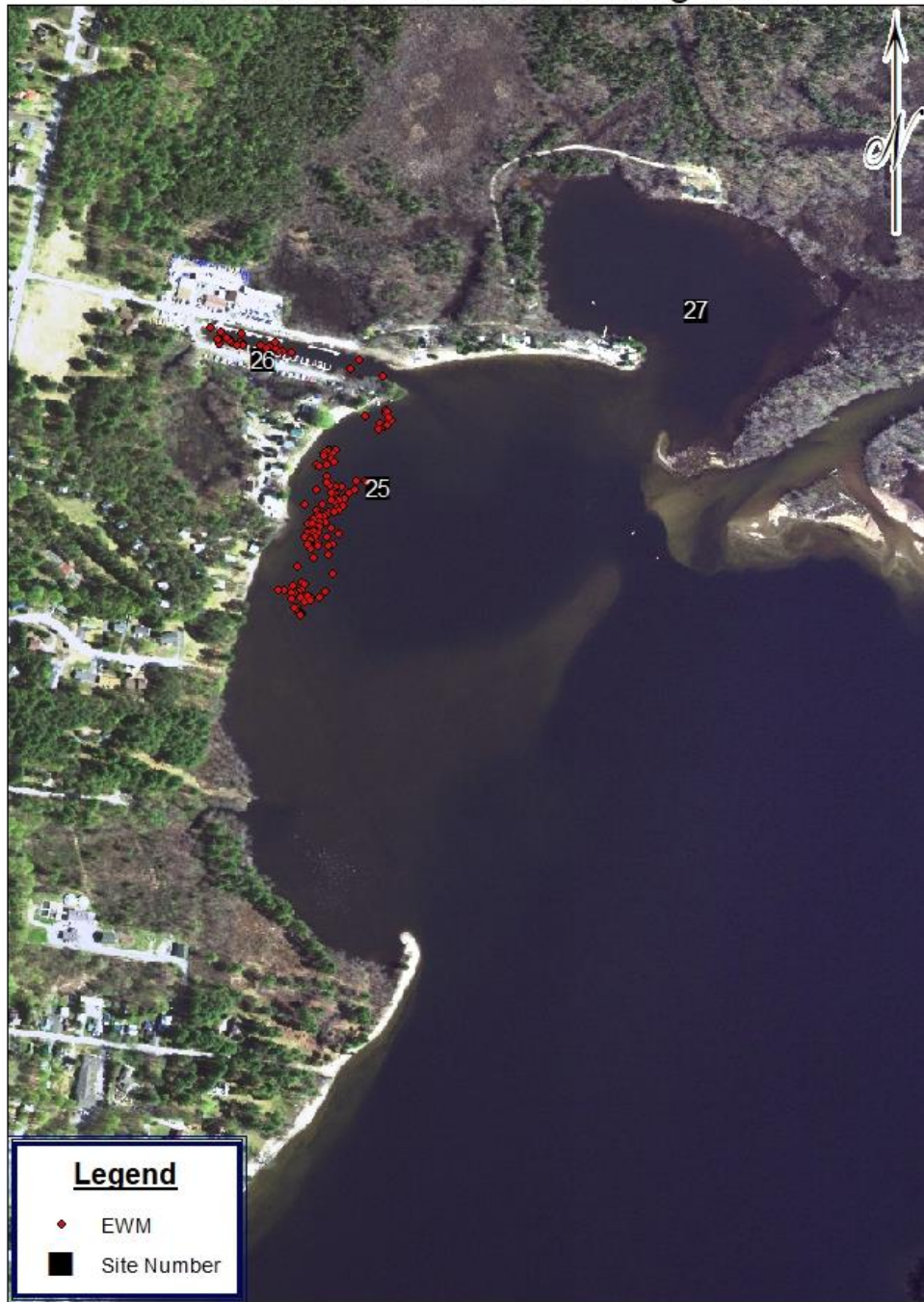
Schroon Lake- week of 26 August 19

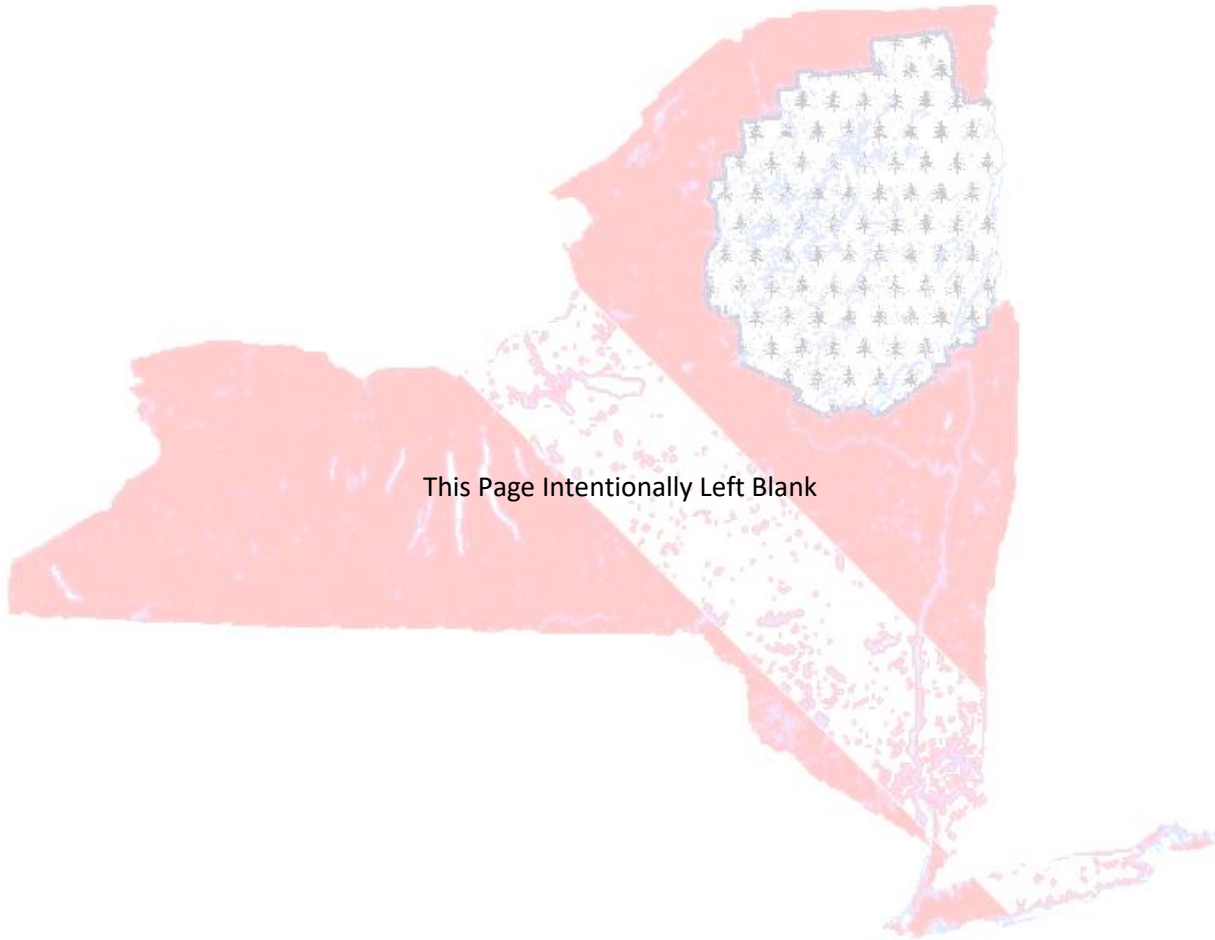


Schroon Lake- week of 26 August 19



Schroon Lake- week of 26 August 19





This Page Intentionally Left Blank