

Aquatic Invasive Species Management Report

Schroon Lake

July 16- July 19, 2018

Prepared By:

INVASIVE SOLUTIONS



DIVE COMPANY, LLC

Overview

This week the Crew began working from where we had left off from the previous harvest (week of June 25th), finishing the target sites for week 1, then the Crew moved south and began working sites northward throughout the lake. It was noted by the Crew that AIS was growing quickly as expect per this time of year (the first week growth seemed slightly behind.)

Sites harvested: 1, 2, 3, 6, 12, 13, 14, 15, 16, 17, 26

Harvest data for the week: 5 ¼ bags @ 131.3 lbs.

Monday- 07/16/2018

Locations: Sites 16, 17

Observations: The Crew began the week picking back up at The Landings (site 17) from where they had previously left off during June's harvest, working the southern ¼ section of the site. Crew found multi-stemmed EWM (approx. 4-7') with small single stems plans in the general proximity (approx. 0.5-1'.) Crew then continued to work south into site 16 finding multi-stemmed EWM (approx. 3-6') with small single stems plans in the general proximity (approx. 0.5-1'.)

Harvest Data: ½ bag @ 12.5 lbs.

Tuesday- 07/17/2018

Locations: Sites 12, 13, 14, 15

Observations: Crew began working the north section of site 15, working south through site 14 then 13. EWM was found sporadically around the south end of site 15 and the north end of site 14. Single-stem plants were between 0.25- 1' and multi-stem were 2-5' which were mixed with native plants. Site 14 was worked without finding any AIS. In site 13, working through the native plants, there was only 1 EWM plant found about 300' offshore. Crew then moved to site 12 finding EWM sporadically throughout the site with the highest density focused toward the center of the bay. The EWM found was multi-stem ranging from 1-10' and single stems 0.5-1'. Most today's harvest data came from site 12.

Harvest Data: ½ bag @ 12.5 lbs.

Wednesday- 07/18/2018

Locations: Sites 1, 2, 26

Observations: Crew began the day at the Schroon Lake Marina (site 26) picking a buoy just outside the marina, finding 6 EWM plants. Crew then began working the east shore from Word of Life Bay (site 2) finding 1 multi-stem CLPW about 5' as well as single stem EWM 2-3'. Crew continued working north into Word of Life Bay (site 1) finding EWM scattered throughout the site with 2 small dense patches of

mature multi-stem plants growing to the surface. Overall EWM varied between 1-8' with a mixture of both single and multi-stems.

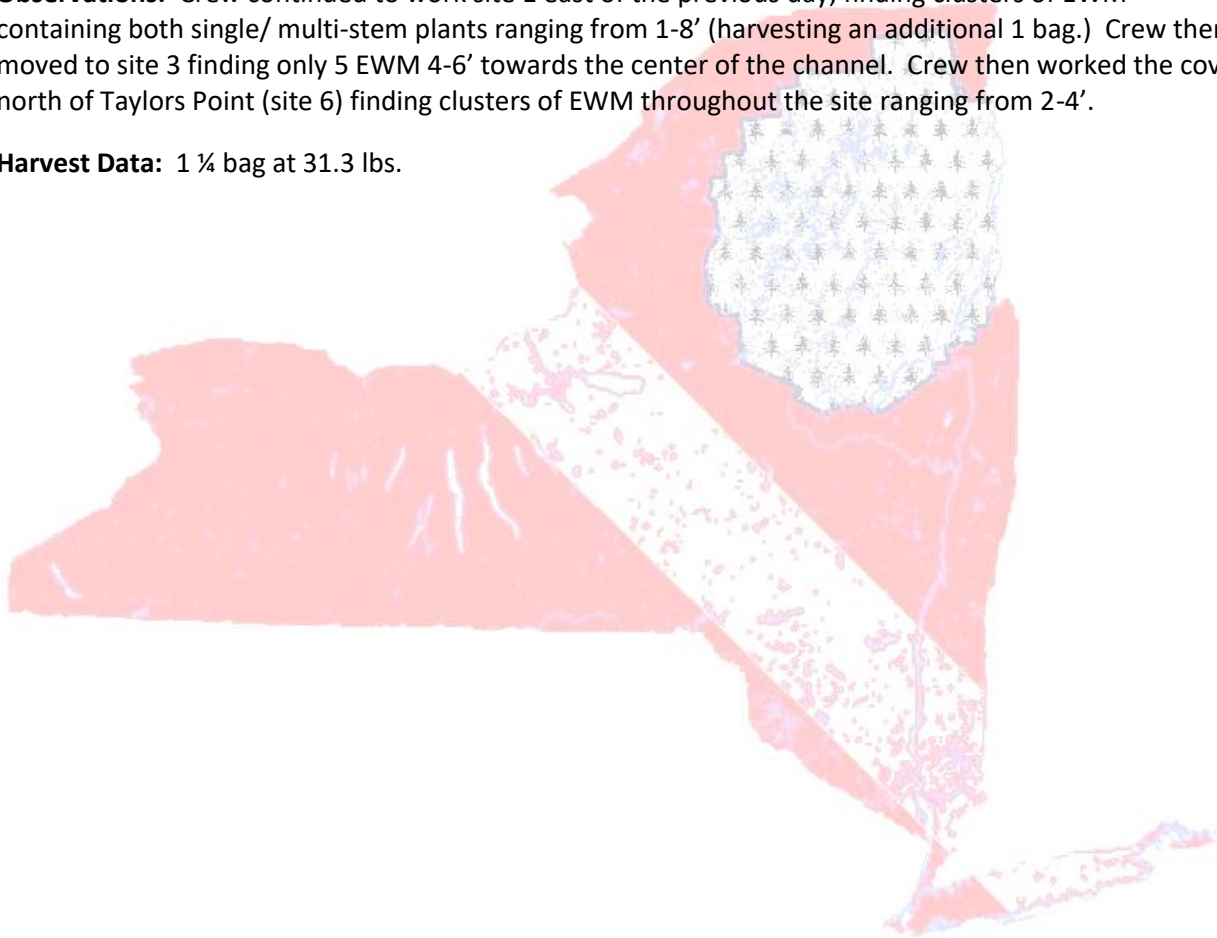
Harvest Data: 3 bags @ 75 lbs.

Thursday- 07/19/2018

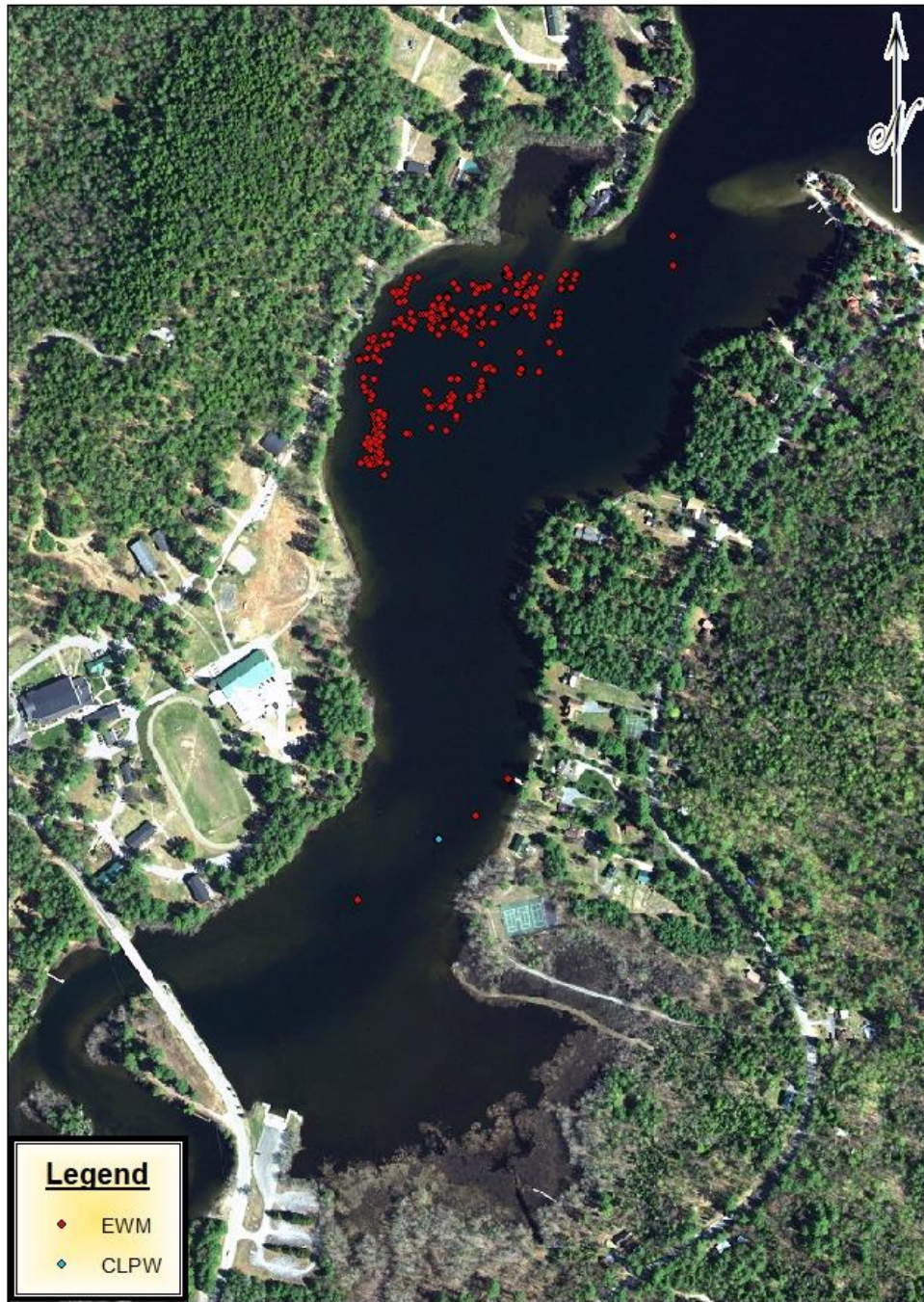
Locations: Sites 1, 3, 6

Observations: Crew continued to work site 1 east of the previous day, finding clusters of EWM containing both single/ multi-stem plants ranging from 1-8' (harvesting an additional 1 bag.) Crew then moved to site 3 finding only 5 EWM 4-6' towards the center of the channel. Crew then worked the cove north of Taylors Point (site 6) finding clusters of EWM throughout the site ranging from 2-4'.

Harvest Data: 1 ¼ bag at 31.3 lbs.



Schroon Lake- week of 16 July 18



Sites 1 (Word of Life Bay,) 2, 3

Schroon Lake- week of 16 July 18



Site 6- north of Taylors Point

Schroon Lake- week of 16 July 18



Site 12- Meadow Cove

Schroon Lake- week of 16 July 18



Sites 13, 14, 15

Schroon Lake- week of 16 July 18



Site 16- Grove Point north
Site 17- The Landings

Schroon Lake- week of 16 July 18



Site 26- Schroon Lake Marina