

Aquatic Invasive Species Management Report

Schroon Lake

July 23- July 26, 2018

Prepared By:

INVASIVE SOLUTIONS



DIVE COMPANY, LLC

Overview

This week the Crew continues working the remaining sites that have not been worked while investigating/ working areas that have been buoyed or brought to our attention. Although not all tips pan out to be AIS they do prove to be useful in addressing problem areas.

Sites harvested: 4, 7, 8, 9, 10, 11, 20, 25, 26, 27

Harvest data for the week: 21.5 bags @ 537.5 lbs.

Monday- 07/23/2018

Locations: Site 4

Observations: Crew worked northwest side of Brill Island (site 4) where a patch of EWM had been buoyed. EWM was found in clusters scattered throughout the rocks off the island. Multi-stem plants ranged from 2-7' and single stem plants ranged 0.5-1'.

Harvest Data: 9 ½ bags @ 237.5 lbs.

Tuesday 07/24/2018

Locations: Sites 4, 11, 20

Observations: Crew began day re-swimming site 4 to ensure all EWM was removed. Crew worked site 20 finding sporadic clusters of multi-stem EWM 3-6' throughout area. Crew swam site 11 around the docks and rock piles finding no EWM.

Harvest Data: 6 bags @ 150 lbs.

Wednesday 07/25/2018

Locations: Sites 7, 8, 9, 10

Observations: Crew began working in the cove west of Gull Point (site 7) finding 1 EWM single stem less than 1'. Crew worked site 8 finding single/ multi-stemmed EWM 3-6' mixed with heavy native plants. Crew swam site 9 finding no EWM. Crew worked site 10 finding only 3 EWM 3' within native plants.

Harvest Data: 1/5 bag @ 25 lbs.

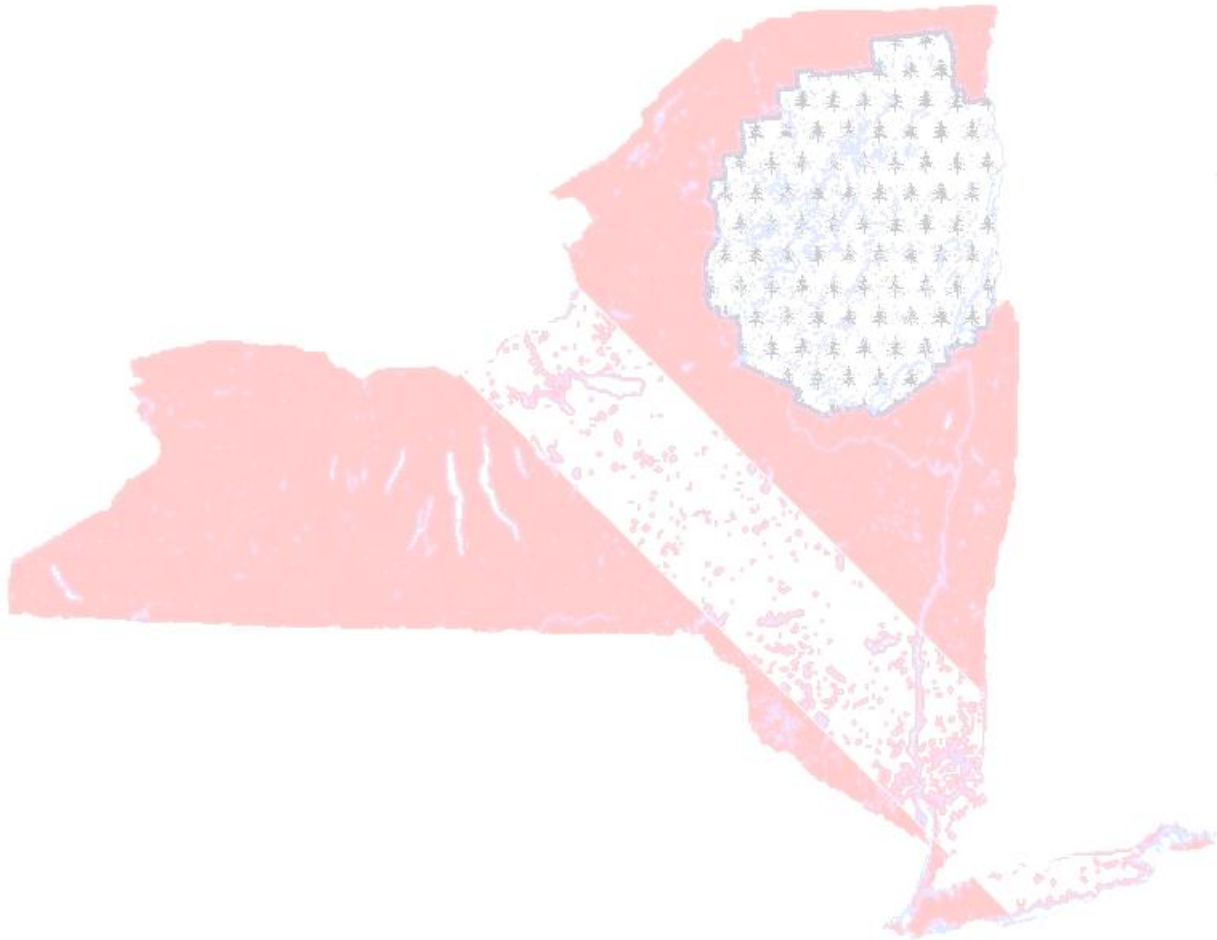
Thursday 07/26/2018

Locations: Sites 25, 26, 27

Observations: Crew worked the Schroon Lake Marina (site 26) where EWM was observed earlier in the week ranging from 0.5-3'. Crew then continued to site 25 finding EWM both single/ multi-stem ranging

from 0.5-2' with a couple multi-stems reaching surface. In addition Crew found CLPW averaging 1'. Crew worked a buoyed area heading towards Lockwood Bay (site 27) finding multi-stem EWM 4-5'. Crew worked site 27 to the north near the shore and docks finding EWM single/ multi-stem 1-7' mixed within heavy natives

Harvest Data: 5 ¾ bags @ 143.8lbs.



Schroon Lake- week of 23 July 18



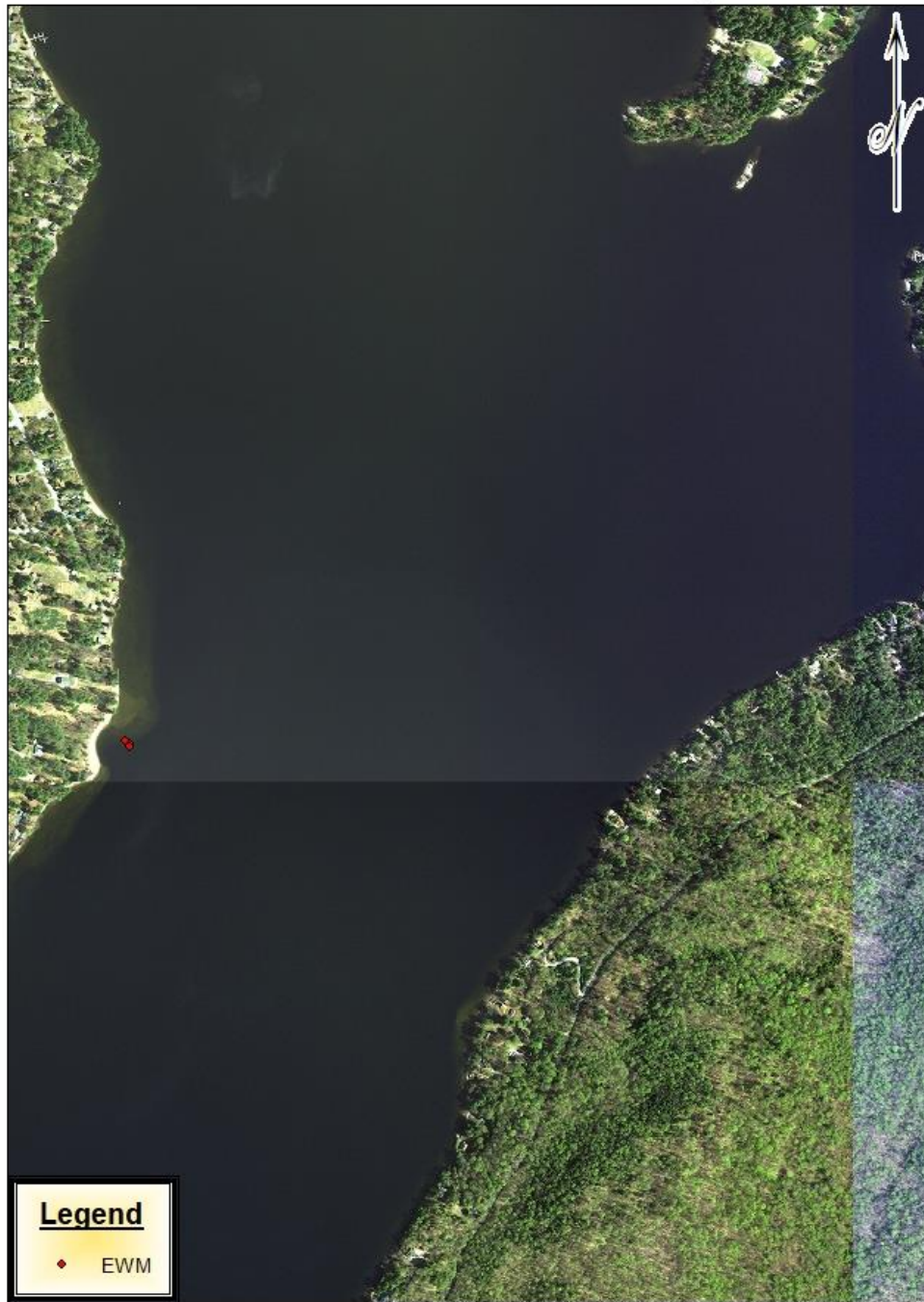
Site 4- north of Brill Island

Schroon Lake- week of 23 July 18



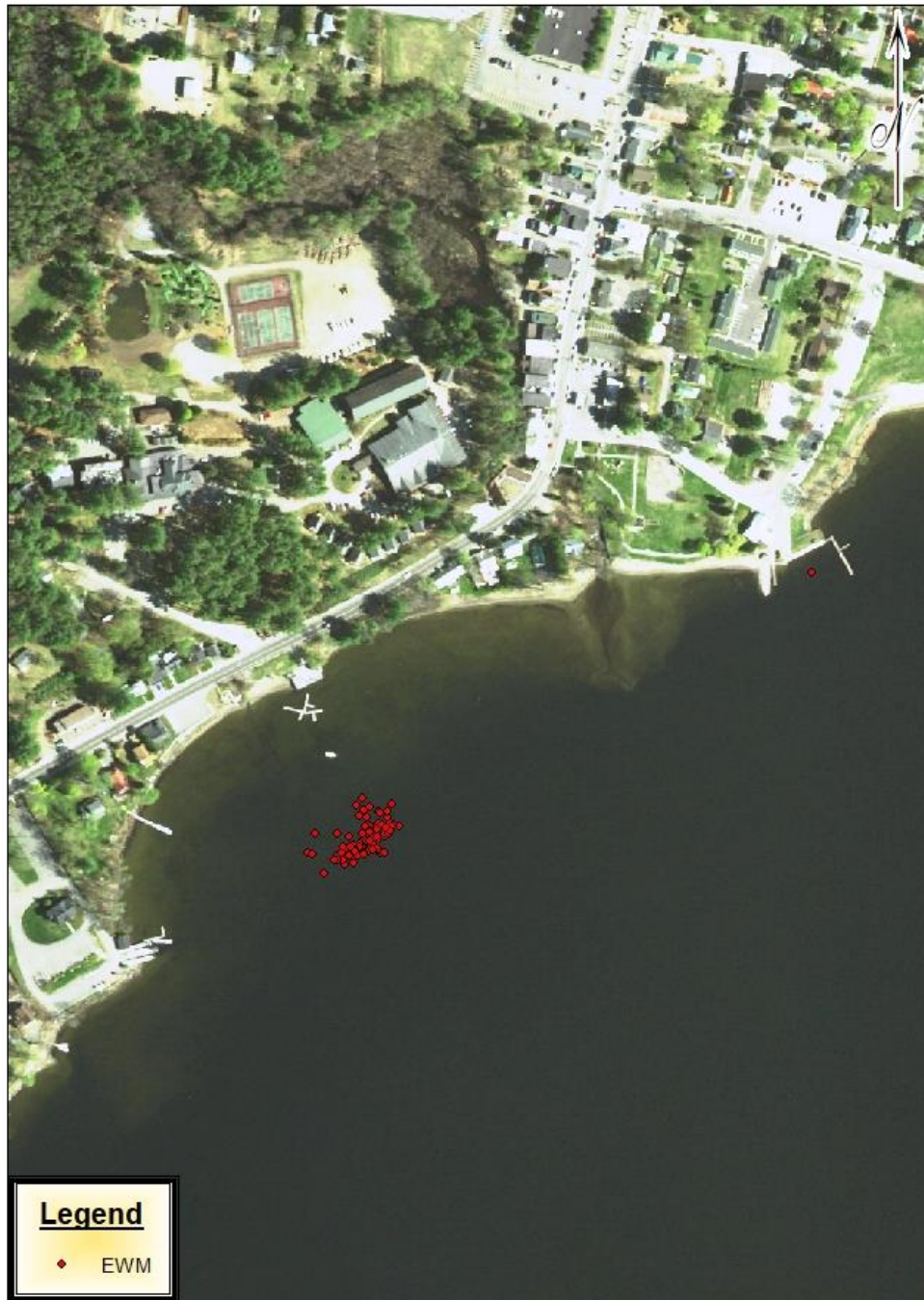
Site 7- cove due west of Gull Point
Site 8- west Narrows

Schroon Lake- week of 23 July 18



Site 10- western point of the Narrows

Schroon Lake- week of 23 July 18



Site 20

Schroon Lake- week of 23 July 18



Site 25
Site 26- Schroon Lake Marina
Site 27- Lockwood Bay