

Aquatic Invasive Species Management Report

Schroon Lake

August 27-30, 2018

Prepared By:

INVASIVE SOLUTIONS



DIVE COMPANY, LLC

Overview

For the final week of work the plan was to finish up the three remaining sites which had not been worked throughout the season, then start working any reported problem sites. Sites to be revisited were mainly prioritized according to their size, confidence of AIS identified, boat traffic seen by the location, and time remaining. Overall, the lake has been efficiently worked, but at least one more week would prove very beneficial to address all reported sites as well as revisit high trafficked sites or sites which produced a high volume of AIS this season.

Sites harvested: 1, 4, 8, 14, 21, 22, 24

Total bag count for the week: 22.3 bags @ 557.5 lbs.

Monday- 08/27/18

Locations: Sites 21, 22, 24

Observations: The Crew began working site 24 working from the northwest portion of the bay, working south along the shore and throughout the native weeds. Crew located EWM in small clusters throughout the bay ranging from 0.3-7' and CLPW in two spots about 3'. Crew then worked site 22, starting in the north and working south finding EWM located down the center of the bay throughout the native plants. The EWM was a mixture of single/ multi-stems ranging from 0.5-10' tall. Crew then continued to site 21 working the east side of the channel within the shallow water markers. The north contained a higher density of EWM mixed within the native plants, while the south contained clusters of EWM throughout the natives. The EWM was both single/ multi-stems ranging from 2-10' with fragmentation collected throughout the worksite.

Harvest Data: 2.5 bags @ 62.5 lbs.

Tuesday- 08/28/18

Locations: Sites 4, 21

Observations: Crew picked back up in site 21 from the previous day, finishing up the southern section of the site. Crew then moved to site 4 to work a patch reported by the boy scouts. Crew found the area was most dense towards the center of the site with EWM ranging from 6-10' while thinner on the outskirts of the area with plants ranging from 1-3'. With decreased visibility the Crew worked Brill island, finding sporadic single stem EWM along the west shore.

Harvest Data: 6.5 bags @ 162.5 lbs.

Wednesday- 08/29/18

Locations: Sites 1, 4, 14

Observations: Crew began the day picking back up in the patch to the west of Brill Island harvesting any remaining EWM found within the area. Crew then moved to site 1 working an area to the northeast of the site finding clusters of EWM, both single/ multi-stemmed, ranging from 1-5'. Crew then moved to

an area just east of site 14, and area discovered the previous year, which contained dense EWM growth mixed throughout native plants. In the center of the patch EWM was mostly multi-stemmed 6-8', becoming mixed single/ multi-stemmed plants 1-4' on the outskirts of the area.

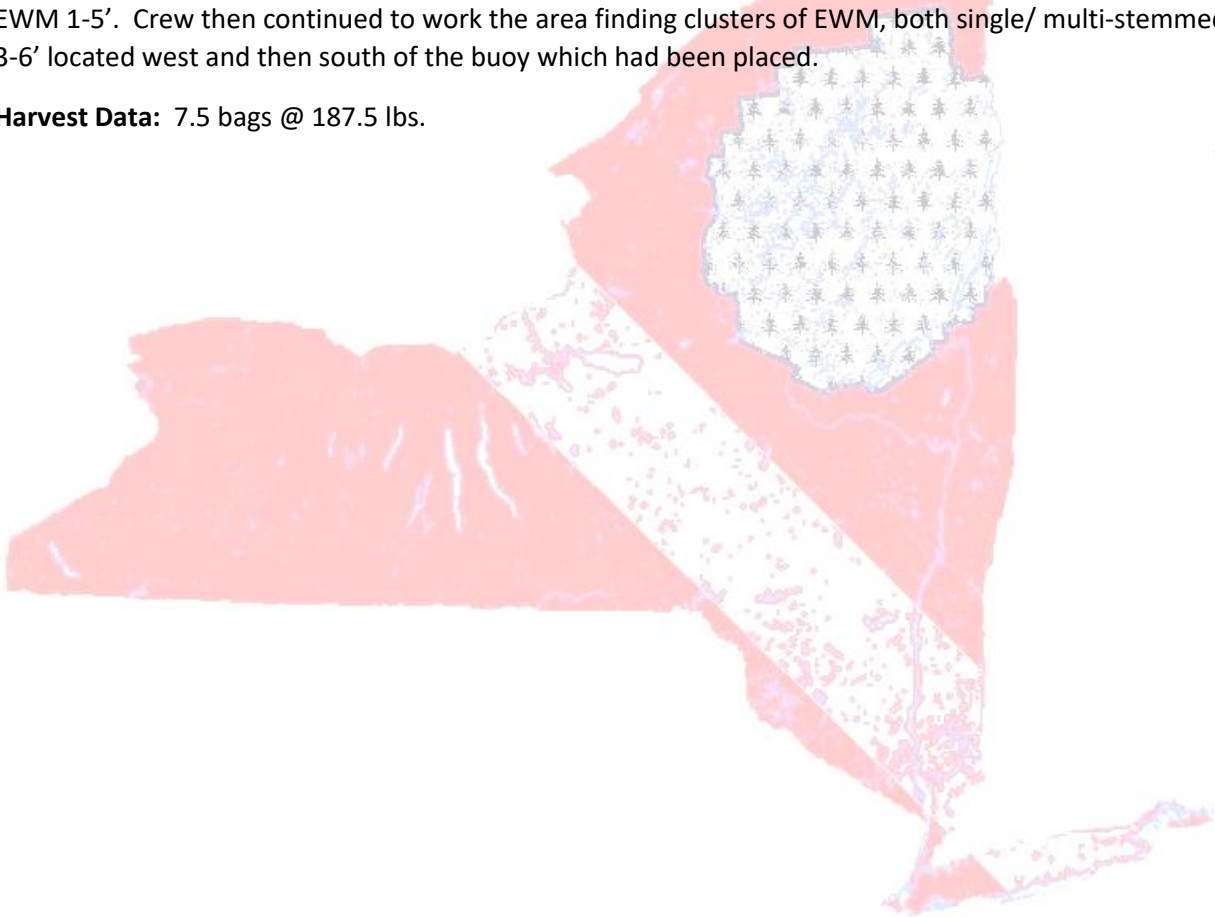
Harvest Data: 5.75 bags @ 143.8 lbs.

Thursday- 08/30/18

Locations: Sites 8, 14

Observations: Crew picked back up from the previous day at site 14 and finished harvesting the site. Crew then moved site 8 working the west shore near where an orange buoy had been placed finding EWM 1-5'. Crew then continued to work the area finding clusters of EWM, both single/ multi-stemmed 3-6' located west and then south of the buoy which had been placed.

Harvest Data: 7.5 bags @ 187.5 lbs.



Schroon Lake- week of 27 August 18



Site 1- Word of Life Bay

Schroon Lake- week of 27 August 18



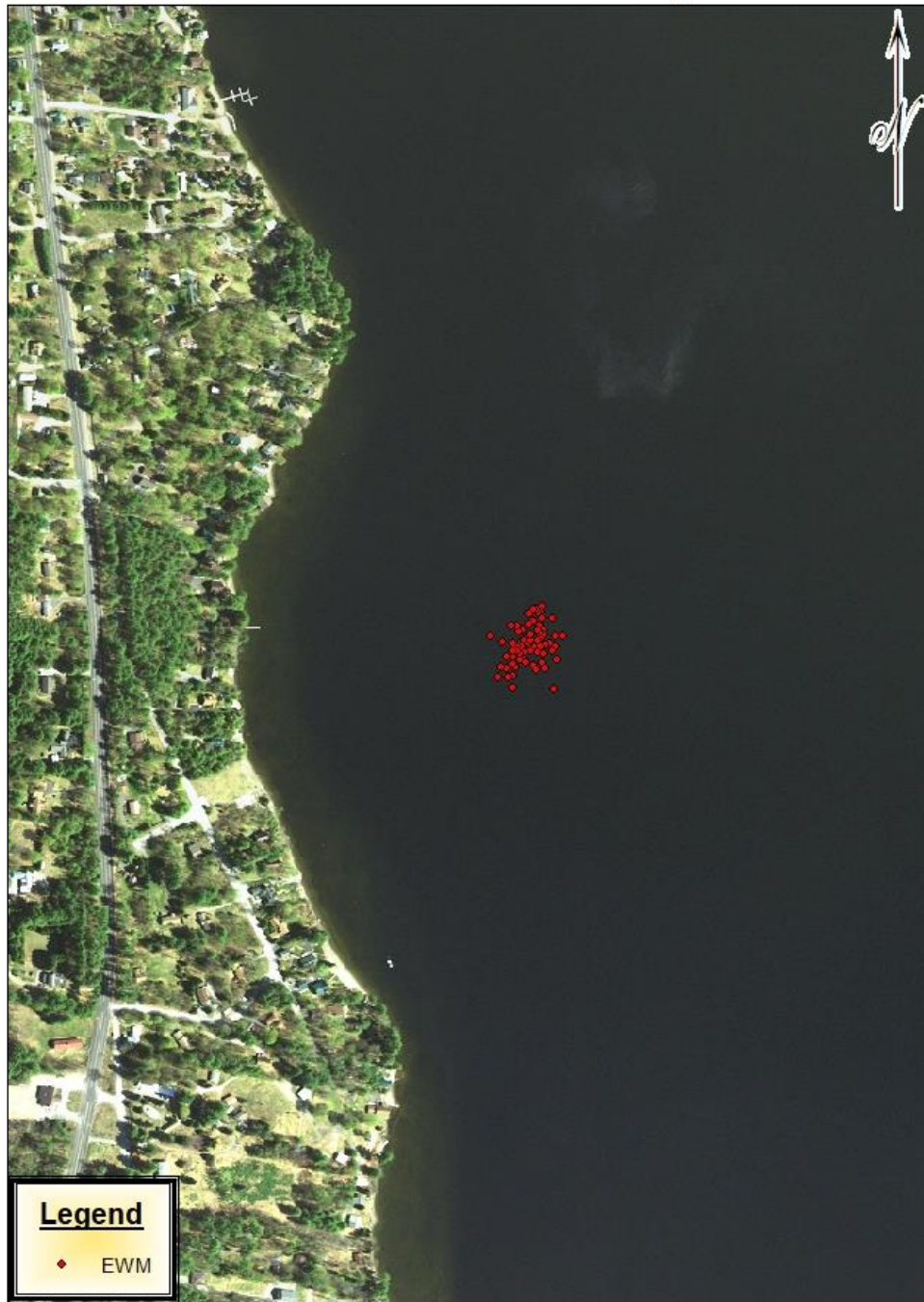
Site 4- West of Brill Island

Schroon Lake- week of 27 August 18



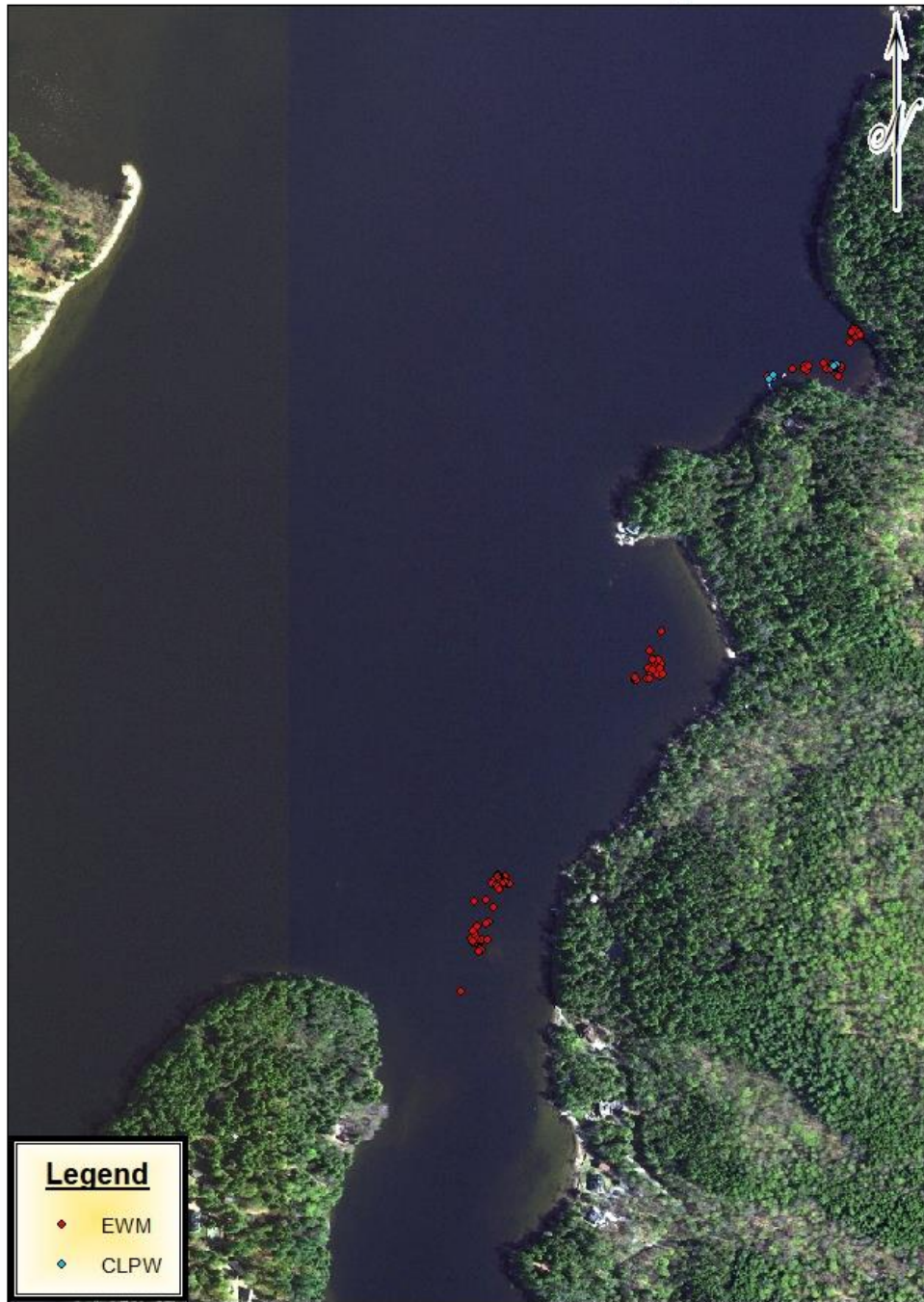
Site 8- West Narrows

Schroon Lake- week of 27 August 18



Site 14

Schroon Lake- week of 27 August 18



Sites 21, 22
Site 24- Steep Bay