

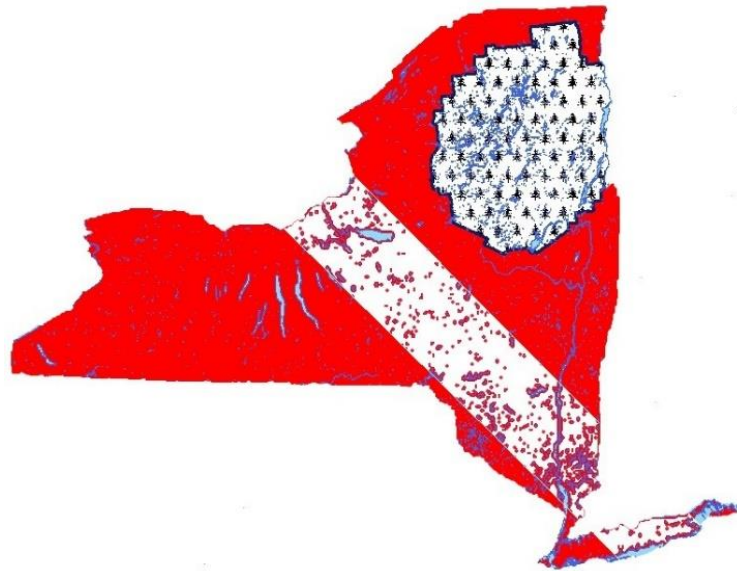
Aquatic Invasive Species Management Report

Schroon Lake

July 29- August 1, 2019

Prepared By:

INVASIVE SOLUTIONS



DIVE COMPANY, LLC

Overview

This week the Crew worked through any remaining sites which had not yet been worked and returned to some sites for follow up work from the previous weeks.

Sites harvested: Sites 6, 7, 8, 9, 10, 11, 12, 13, 15, 20, 22, 23, 24, 27

Harvest data for the week: 4.5 bags @ 112.5 lbs.

Operations

Monday- 7/29/19

Locations: Sites 12, 13, 15, 20, 22, 23, 24

Description: Crew began the week where they had left of the previous week in site 22 harvesting single stem Eurasian Watermilfoil (EWM) within the native plants, ranging from 0.5-3' in length.

Crew moved to site 24 harvesting both single/ multi-stem EWM in small clusters throughout the site, ranging from 0.5-6' in length. ¼ bag harvested.

Crew worked site 23 in the area south of the boat launch, harvesting majority single stem EWM 0.5-6' in length. ¼ bag harvested.

Crew worked site 20 harvesting a few EWM single stems, 0.5-1' in length.

Crew revisited site 15 because their harvest of the site the previous week was rushed due to time constraints but found no additional aquatic invasive species (AIS).

Crew worked site 13 locating no AIS.

Crew began working site 12 locating a handful of EWM within the native plants ranging from 2-4' in length as well as one Curly-leaf Pondweed plant.

Harvest Data: ½ bag @ 12.5 lbs.

Tuesday- 7/30/19

Locations: Sites 8, 10, 12

Description: Crew began the day picking up where they had left off in site 12, finding single/ multi-stem EWM 1-8' in height sporadically throughout the site. ¼ bag harvested.

Crew worked site 10 locating one EWM mixed within the native plants.

Crew began working site 8 locating clusters of EWM, both single/ multi-stem throughout the native plants in the site, ranging from 0.5- 8' in height. ½ bag harvested.

Harvest Data: 3/4 bag @ 18.8 lbs.

Wednesday- 7/31/19

Locations: Sites 6, 7, 8

Description: Crew picked up from where they had left off in site 8, continuing to find clusters of EWM within the native plants. ¼ bag harvested.

Crew worked site 7 locating no AIS.

Crew began working site 6 locating two EWM plants.

Harvest Data: ¼ bag @ 6.3 lbs.

Thursday- 8/1/19

Locations: Sites 6, 9, 11, 27

Description: Crew picked up from where they had left off in site 6 harvesting an additional six EWM plants within the native plants, ranging from 1-4' in length.

Crew swam site 9 with a focus on the docks in the area but located no AIS.

Crew swam site 11, noting limited plant growth within the site, locating no AIS.

Crew finished the week in site 27 harvesting single/multi-stem EWM 1-4' throughout the native plants. Crew noted the majority of plants were harvested from the west and north shoreline areas. Additionally, the Crew noted the with the combination of depth, water clarity, and dense native plant growth this site is slow to harvest. 3 bags harvested.

Harvest Data: 3 bags @ 75 lbs.

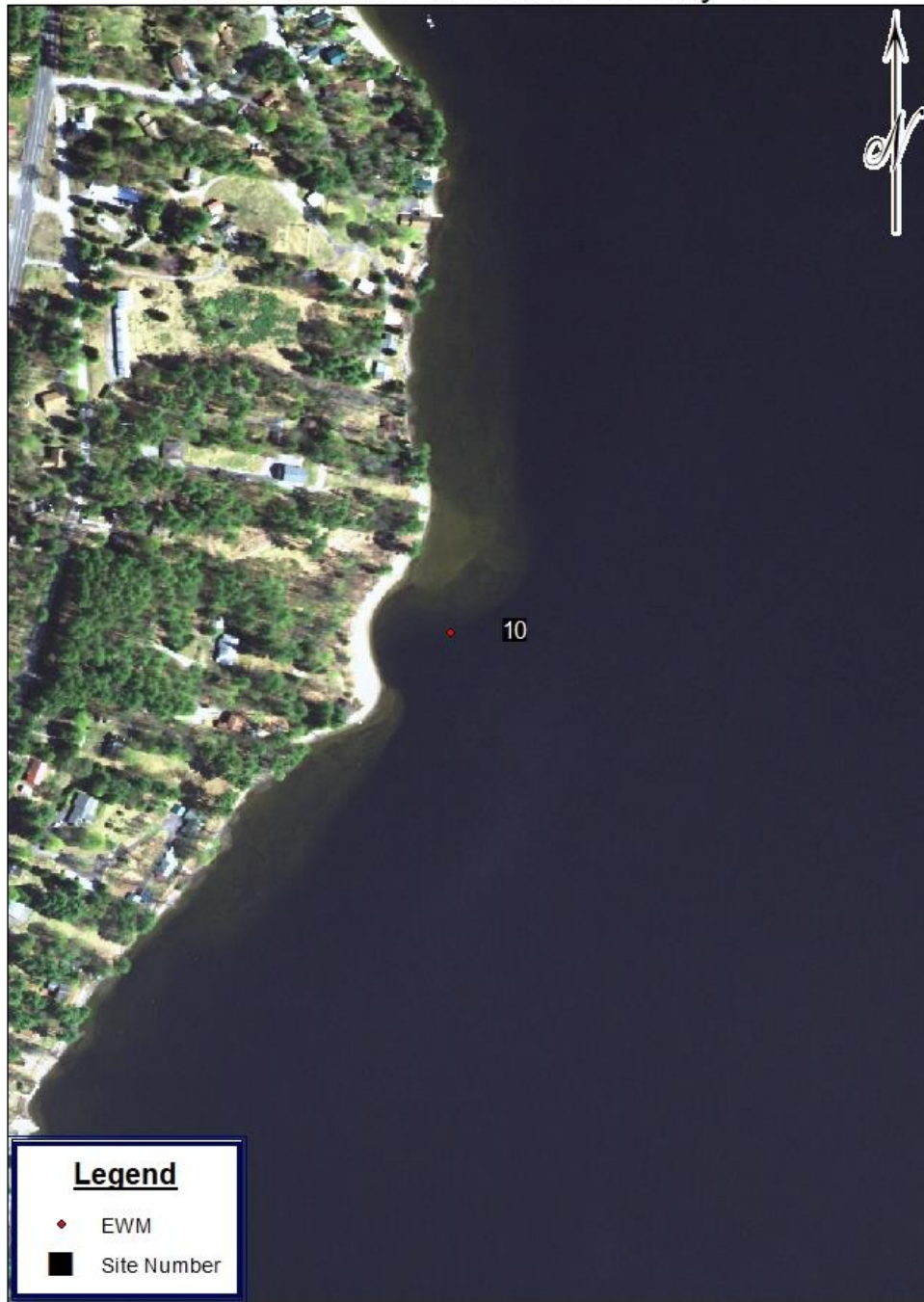
Schroon Lake- week of 29 July 19



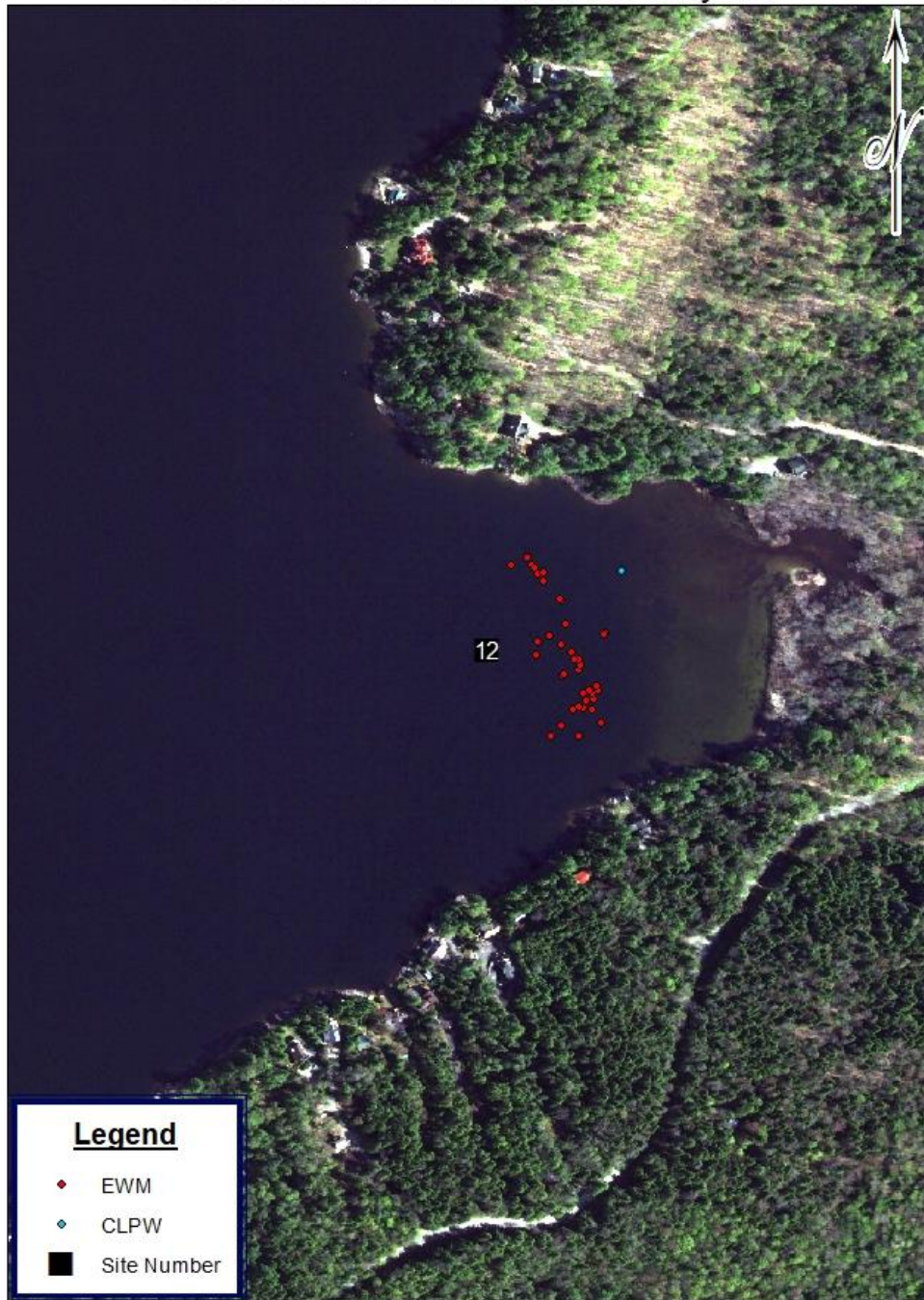
Schroon Lake- week of 29 July 19



Schroon Lake- week of 29 July 19



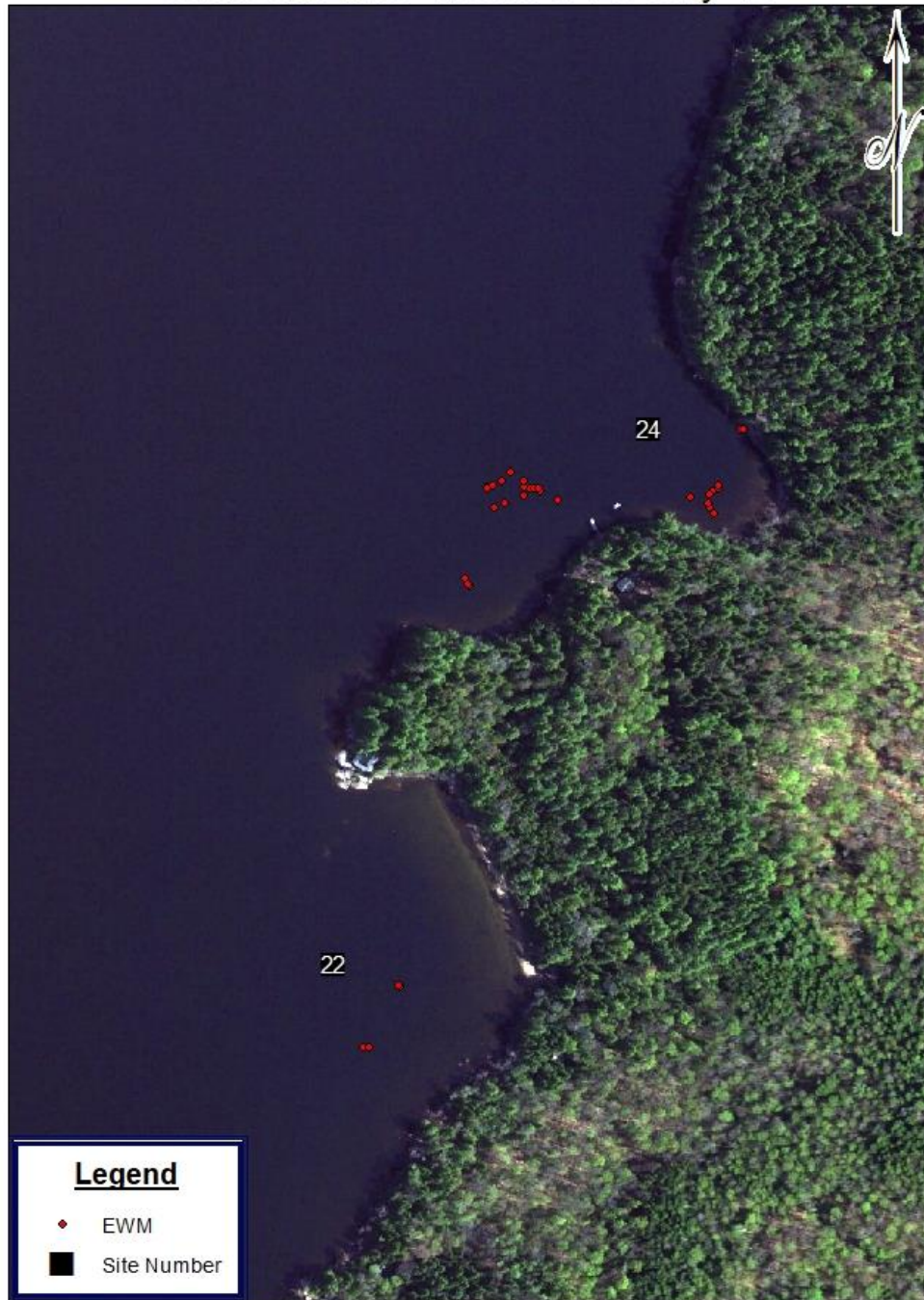
Schroon Lake- week of 29 July 19



Schroon Lake- week of 29 July 19

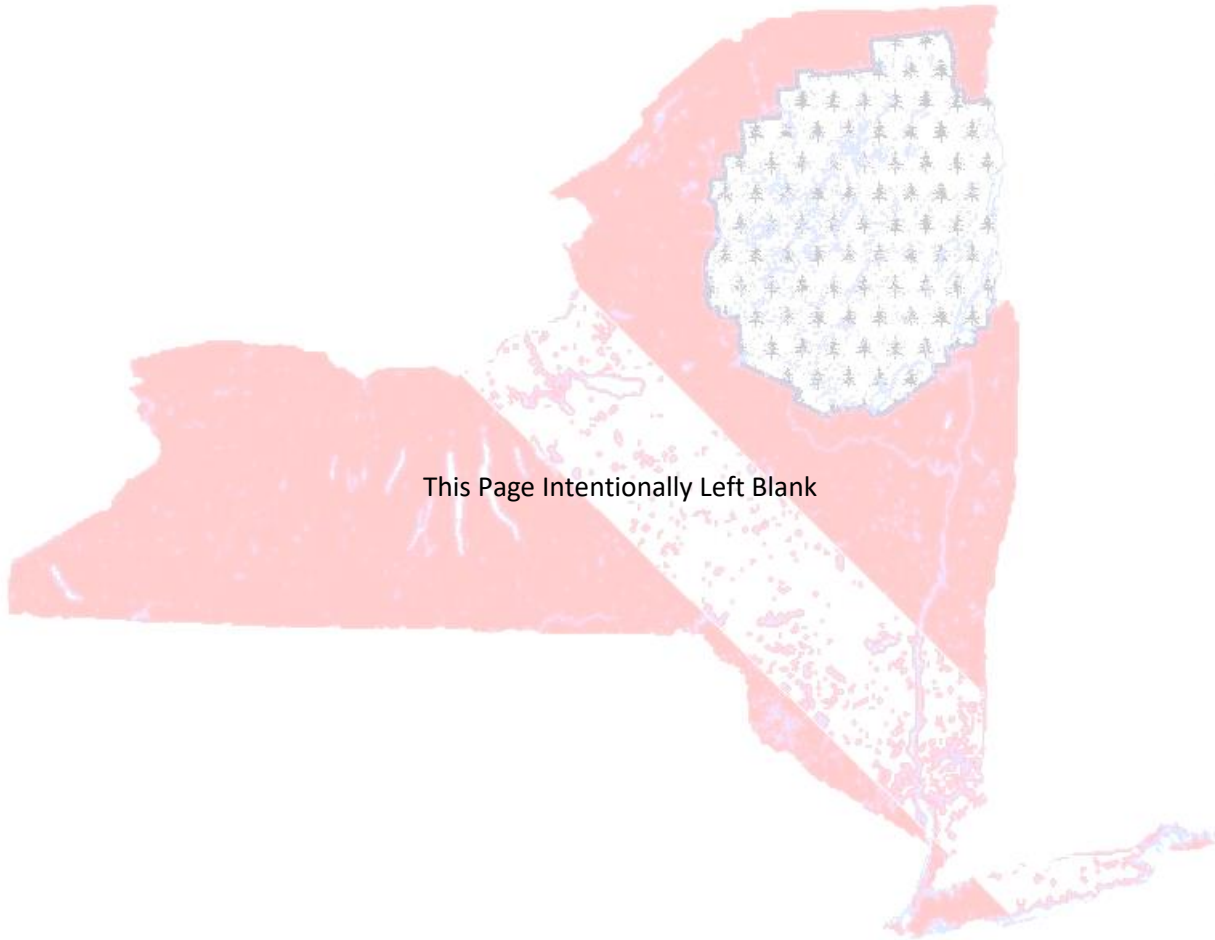


Schroon Lake- week of 29 July 19



Schroon Lake- week of 29 July 19





This Page Intentionally Left Blank