



Schroon Lake Week 1 Harvest Report 2015

Week- May 31, 2015 - June 04, 2015

Crew leader- Blayne Colvin

Monday- First, we swam the east shore at the south end of the lake to the sandy point. We picked 10 multi stem milfoil plants in that area. After, we went to Adirondack Lodge where the runoff made the visibility only about 6 inches so we were only able to pick 5 milfoil plants there. After lunch, we swam from the landing docks to the Word of Life barge and recovered 17 plants from there.

Tuesday- First, we line swam Meadow Cove recovering a quarter bag of multi-stem plants. Most of these were found near the deeper drop-off edge of the littoral zone. After lunch, we started at a small bay on the left side of the Word of Life Island, swimming from the south end to the north end. We recovered 4 plants on the south tip. As we continued north on the east side of the Word of Life island we found a small patch of about 25 single stem plants, located behind the Word of Life barge. We finished the day at the north end of the Word of Life island where we found 0 plants.

Wednesday- First, we rechecked the Adirondack Lodge area for better visibility. Visibility was still poor so we were unable to check for plants. We then went to the south end of the lake and swam the southernmost cove on the west side. There we recovered about 25 multi-stem milfoil plants. Continuing up the lake a little north of Eagle Point there is a cove on the west side that has a sandy point, we swam the littoral area of the cove recovering about 25 plants. After lunch we went to the northernmost bay and surface spotted around the lily pads recovering 7 single stem milfoil plants. We finished off the day by swimming in front of the camps by the marina discovering a small patch of about 20 plants.

Thursday- First, we swam from the point with the log pile to the landings where we discovered about 80 plants on the log pile. A few multi-stem but mostly single stem new growth. After picking a majority of those plants, the visibility became poor and forced us to move on. We continued down the shoreline to the landing and only found about 10 plants there, all new growth. After lunch, we returned to the log pile to clean up any left from earlier, only 3 plants were recovered. We then returned to the north end of the Word of Life Island to check where a patch was discovered last year. We only found 6 plants, all new growth.

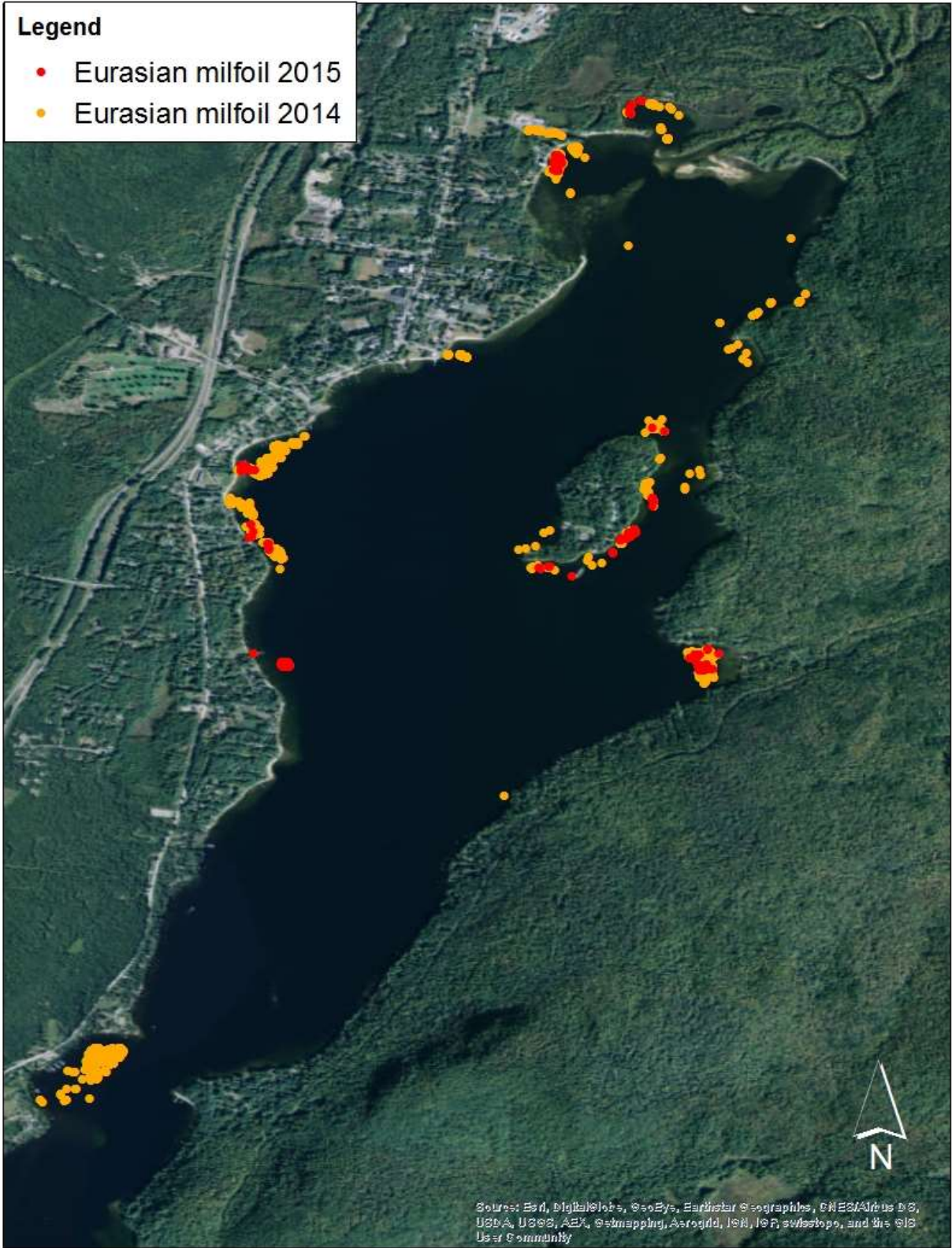
Total bags harvested: 3 bags 75 lbs

Recommendations: The Adirondack Lodges area will need to be harvested during the next visit since a lack of visibility due to high runoff flow prevented adequate coverage this week.

Harvest maps are attached with areas marked in 2014 shown in orange.

Legend

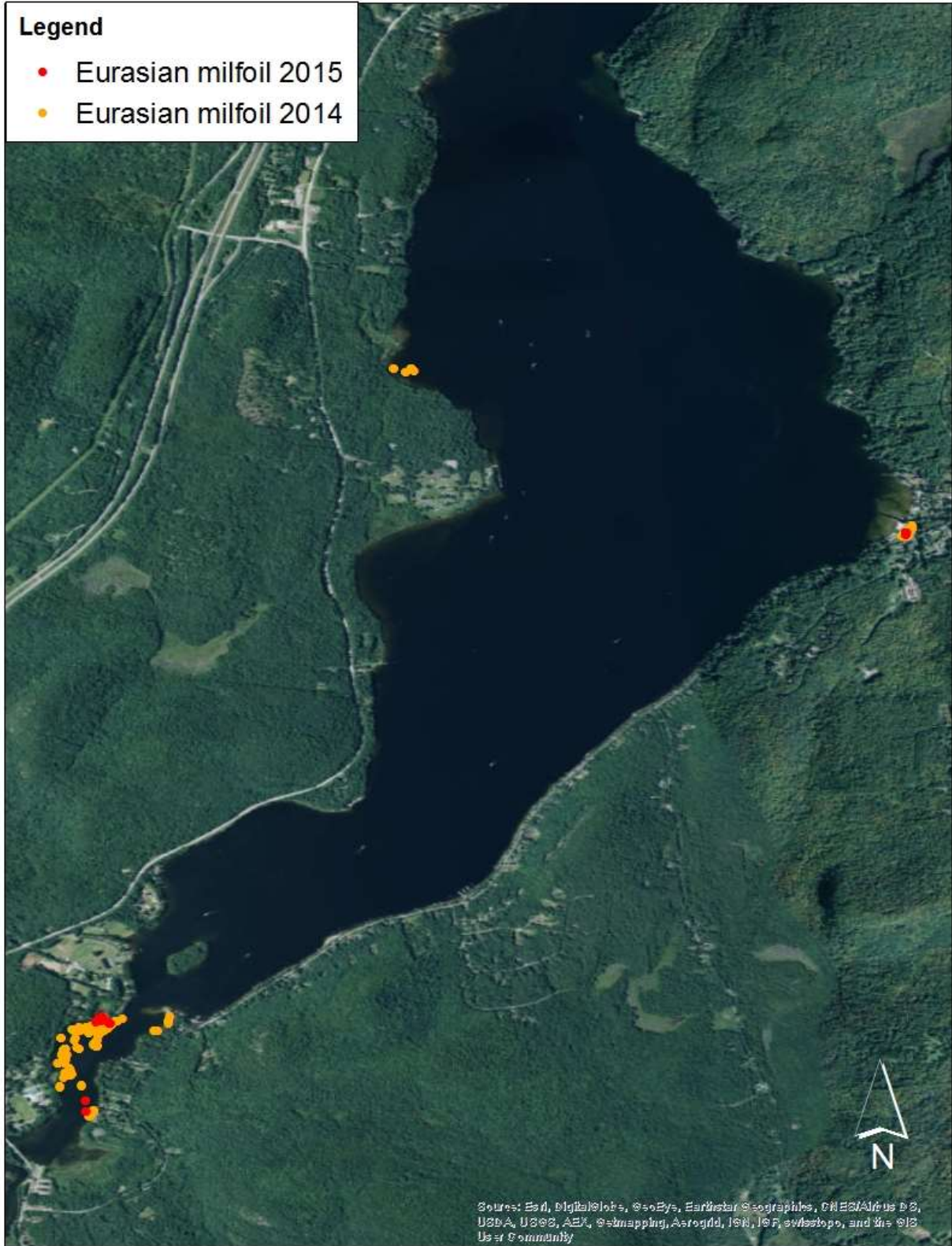
- Eurasian milfoil 2015
- Eurasian milfoil 2014



Source: Esri, DigitalGlobe, GeoEye, Earthstar Geographics, CNES/Airbus DS, USDA, USGS, AeroGRID, IGN, IGP, swisstopo, and the GIS User Community

Legend

- Eurasian milfoil 2015
- Eurasian milfoil 2014



Source: Esri, DigitalGlobe, GeoEye, Earthstar Geographics, CNES/Airbus DS, USDA, USGS, AeroGRID, IGN, ICF, Swisstopo, and the GIS User Community